

JVC®

The Perfect Experience / —

DUAL STREAM NETWORK CAMERA

VN-V25U VN-V26U

[with audio support]

IP Cameras with Progressive Scan CCD and Simultaneous Distribution of MPEG-4 & Motion JPEG Pictures



V.NETWORKS

progressive Scan
Power over Ethernet

30 VGA fps
DUAL STREAM

IR Cut filter*
Day | Night

Bi-Directional*
Audio
*VN-V26U only

Two-Way Audio Communication and Reliable Day/Night Function for Versatile Monitoring and Security Applications



■ 1/4" Progressive Scan CCD

For sharper, clearer images without any flicker even for moving images

■ MPEG-4/Motion JPEG Full-Frame Dual Stream

Simultaneous distribution of MPEG-4 and Motion JPEG VGA images at full frame rate (30fps for each stream)

■ Bi-Directional Audio Support (VN-V26U)

Two-way audio communication is possible with a built-in mic and as well as audio output

■ Day/Night Function with IR Cut Filter (VN-V26U)

Automatic switching between day and night modes for reliable round-the-clock surveillance

■ Effective Backlight Compensation

Easy Wide-D Function provides clear images even in backlit situations

■ Privacy Mask for Protecting Intrusive Monitoring

Free shape and unlimited number of masked areas can protect subjects from invasion of privacy

■ PoE for Saving Installation and Cable Costs

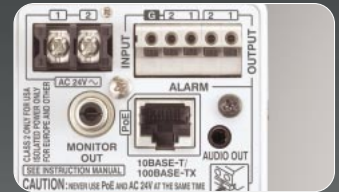
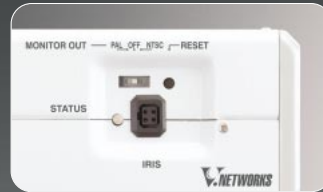
Built-in PoE (Power over Ethernet) allows the camera to be activated through a LAN cable connection.

■ Easy Setup and Viewing with Built-in Tools

Web-based setup tools and a viewer are built into the camera

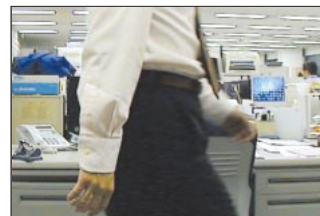
Product photos shown with optional lens

Full Array of Intelligent Monitoring Functions in an Easy-to-Use, Compact Design



1/4" Progressive Scan CCD for Clear, Precise Images

The VN-V25U/V26U's progressive scan images are optimal for monitoring on LCD or TFT monitors. You can obtain clear images without distortion even for moving objects.



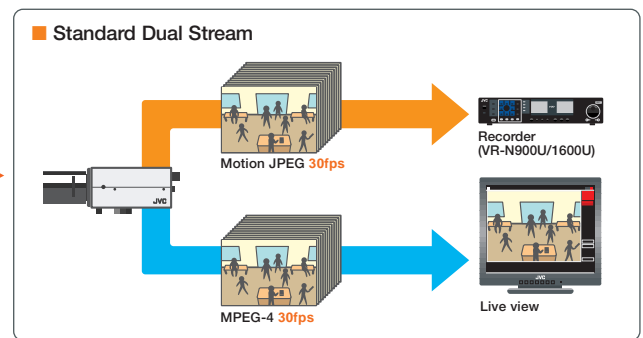
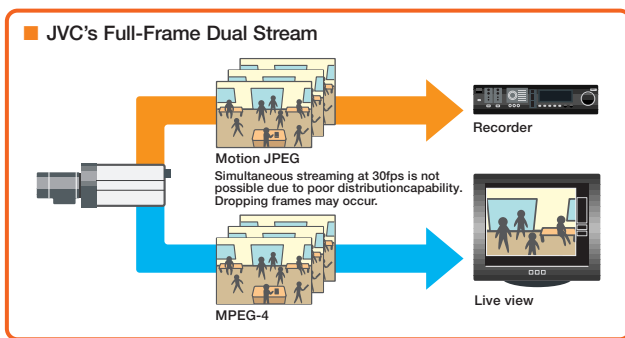
VN-V25U/V26U Progressive Scan



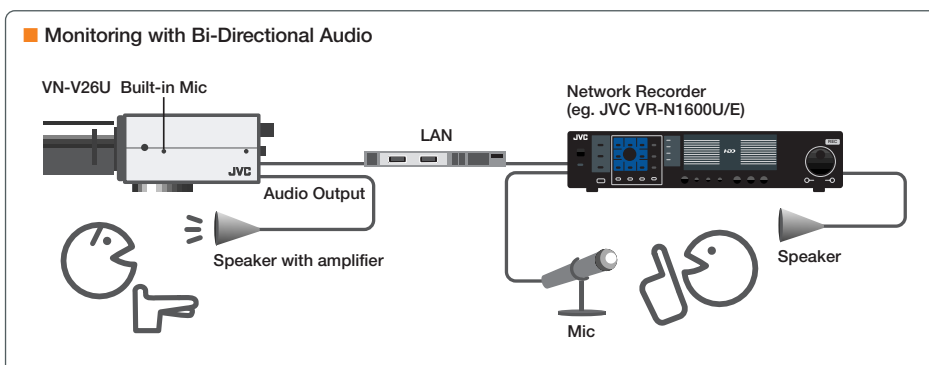
Interlaced Scan

MPEG-4/Motion JPEG Full-Frame Dual Stream

The VN-V25U/V26U can stream both MPEG-4 and Motion JPEG images simultaneously at the full frame rate (30 fps for each stream). MPEG-4 distribution is ideal where monitoring with smooth, high frame rate images is required within a limited bandwidth. And Motion JPEG images are useful when you need to record images as evidence data because of the high quality still pictures it can provide.



The VN-V26U incorporates a built-in mic and an audio output for bi-directional audio communication. So in addition to viewing the camera spot, you can listen in on the area from a monitoring room. With an external speaker attached, you can speak to or emit an alarm sound for visitors. A more advanced monitoring system with the capability of conversation and warning can also be configured.



- Compatible JVC recorders:**
- VR-N1600U/E Series Network Video Recorder
 - VN-RS800U (Free software for surveillance with up to 32 cameras)



VN-V25U

Day/Night Function with IR Cut Filter (VN-V26U)

For more assured day/night security applications, the VN-V26U features an IR Cut Filter which automatically switches ON or OFF according to the level of ambient light. In daytime it outputs a high-quality color image, and at night the filter mechanism removes the IR filter to output black-and-white images with greater sensitivity. With the VN-V25U, there's the Easy Day/Night Function which automatically engages color mode when objects are bright, and B&W mode when it is very dark.

Easy Wide-D Function for Backlight Compensation

The VN-V25U/V26U's Easy Wide-D function is equivalent to the conventional Wide Dynamic Range function, allowing pictures to be adjusted to identify details of the subject even in backlit conditions.



Normal picture



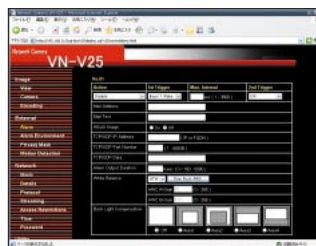
Adjusted with Easy Wide-D

PoE for Saving Installation and Cable Costs

Built-in PoE (Power over Ethernet) allows the camera to be activated through a LAN cable connection. The PoE function not only reduces cost for installation and power units, but also enables uniform management of the power supply and easy response in case of a power failure in conjunction with UPS devices. (IEEE 802.3af supported)

Easy Setup and Viewing with Built-in Tools

Setup of the VN-V25U/V26U can only be done with Internet Explorer. Since all necessary tools are built into the camera unit, just access the camera via a PC and the setup tools and viewer tool will be available on screen. With the built-in viewer, a variety of operations including snapshot and alarm reception are possible. (Recording is not possible with the viewer.)



Set-up screen



Built-in Viewer

Privacy Mask for Protecting Intrusive Monitoring

You can protect subjects from invasion of privacy by masking certain areas of the screen. Mask areas can be specified using bitmap-format overlay data. Positions and shapes of areas can be freely set and number of areas are unlimited.



Without Privacy mask



With Privacy mask

Images are explanatory purposes and are not actual images attained using this product.

Compact Design

The VN-V25U/V26U is 20% smaller than a conventional JVC box-type camera. In addition, thanks to the inner tripod base, it can be installed into an even smaller housing.

Lowest Operating Temperature of -10°C

The VN-V25U/V26U can be used in a wide range of environments. Its operable temperature range is from -10°C to 50°C (14°F to 122°F). No special housing is necessary for installation even when switching from an existing CCTV system.

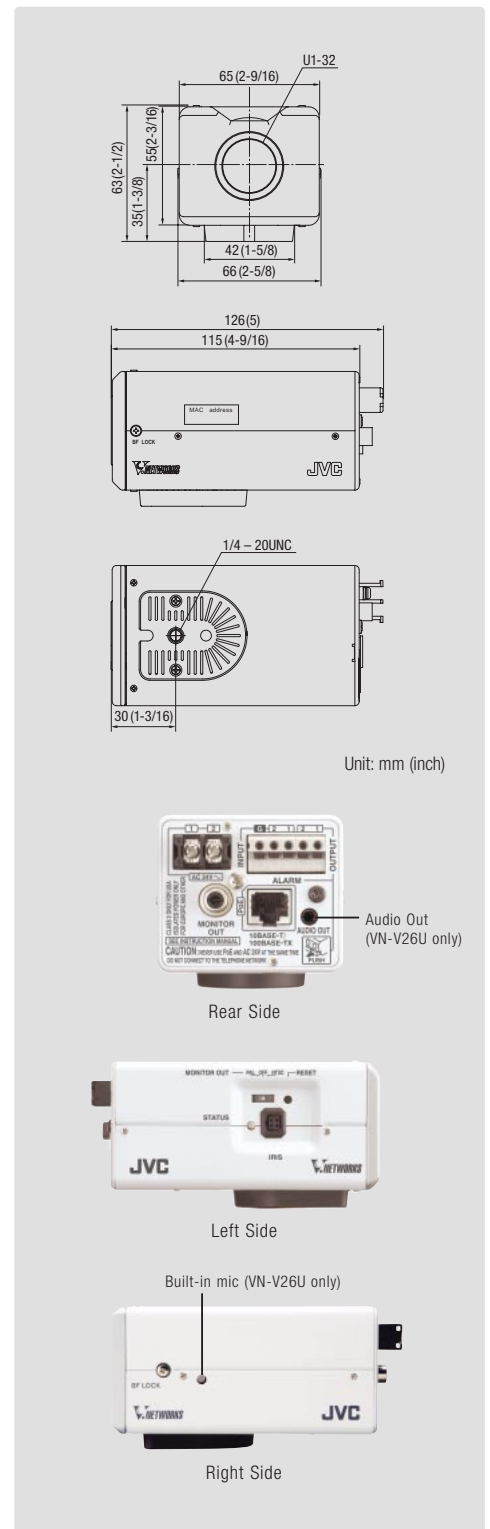
Other Features

- Motion Detection
- NTSC/PAL Monitor Output (only for setup)
- FTP/Client Function
- Multicasting Capability

Specifications

Image device	VN-V25U: "Super HAD CCD" 1/4" Progressive scan VN-V26U: "EXview HAD CCD" 1/4" Progressive scan	
Lens (not included)	C/CS	
Minimum illumination	Color	VN-V25U: 1.0 lx (F1.2, 50% video, AGC SUPER) 0.5 lx (F1.2, 25% video, AGC SUPER) VN-V26U: 0.6 lx (F1.2, 50% video, AGC SUPER) 0.3 lx (F1.2, 25% video, AGC SUPER)
	B&W	VN-V25U: 0.8 lx (F1.2, 50% video, AGC SUPER) 0.4 lx (F1.2, 25% video, AGC SUPER) VN-V26U: 0.06 lx (F1.2, 50% video, AGC SUPER) 0.03 lx (F1.2, 25% video, AGC SUPER)
Day/Night	VN-V25U: Easy Day/Night VN-V26U: IR cut filter ON/OFF	
Picture compression	Motion JPEG: Variable (VFS)/Average (AFS) selectable MPEG-4: Part 2 (ISO/IEC 1449602) CBR/VBR selectable, Profile: SP	
Picture resolutions	640 x 480, 320 x 240	
Frame rate and streaming	Up to 30fps per each stream of Motion JPEG and MPEG-4 in 640x480 resolution simultaneously (Full frame dual stream)	
Image settings	Compression levels: VFS 7 steps, AFS 10KB-100KB (Motion JPEG) / Bit rate adjustable (MPEG-4) Monitor type Other settings: AGC, BLC, White level, Black level, Gamma, Enhance, Color level, Shutter speed, Day/Night Overlay capabilities: Time, Date, Text (Camera ID), Privacy mask, Motion Detection	
Audio (VN-V26U only)	Two-way (full/half duplex) or one-way Built-in microphone Mono audio output (line level) connector Audio compression: μ -law 64 kbps, AD/DA 16bits Fs=8kHz	
Access protection	3 levels password, IP address filtering, HTTPS encryption (for setting)	
Shutter speed	2 sec to 1/10000 sec	
Max. clients	20 simultaneous users, Unlimited users by multicast	
Alarm/Event management	Events triggered by built-in motion detection, external inputs or according to schedule. Image upload over FTP, e-mail Notification over TCP, UDP, e-mail and external outputs Pre- and post- alarm buffer of up to 8MB (approx. 2min. of 640x480 at 3 fps / JPEG stream)	
Connectors	RJ-45 for Ethernet 10Base-T/100Base-TX Terminal block for 2 alarm input, 2 output RCA for Monitor out (for setup only) Alternative power connection Mini jack dia. 3.5 mm for mono output (VN-V26U only)	
Power	24 VAC (50Hz/60Hz), 0.35A or 48 VDC (PoE), 115mA (5.5W)	
Operating temperature	-10°C to 50°C/14°F to 122°F (0°C to 40°C/32°F to 104°F recommended)	
Installation and maintenance	Web based setting tool, Camera search tool, Firmware update over HTTP	
Minimum web browsing requirements	Windows XP Pro (SP2)/Home (SP2), IE6.0, Pentium4 (1.5GHz), 1GB memory Display and video card: 1024x768 True color (24bit or 32bit) 256MB VRAM	
System integration support	Open API for application integration, ActiveX Viewer, QoS, Embedded Linux operating system	
Supported protocols	TCP/IP, UDP/IP, FTP, ICMP, ARP, DHCP, SNMP, HTTP, DSCP	
Video management software/hardware (not included)	VR-N900U/1600U/1600E: JVC Network video recorder for viewing, recording and archiving up to 9/16 cameras. VN-RS800U: JVC free video management software for viewing, recording up to 32 cameras (JPEG stream only)	
Dimensions (WxHxD)	65mm x 63mm x 126 mm (2-9/16" x 2-1/2" x 5")	
Weight	VN-V25U: 480g (1.06lbs) VN-V26U: 530g (1.17 lbs)	

Dimensions



"Super HAD CCD" and "EXview HAD CCD" are registered trademarks of Sony Corporation.

All brand or product names may be trademarks and/or registered trademarks of their respective owners. Copyright © 2008, Victor Company of Japan, Limited. All Rights Reserved.

JVC®

DISTRIBUTED BY



■ Hachioji Business Centre of Victor Company of Japan, Ltd. has received ISO14001 Certification for environmental management and ISO9001 Certification for quality assurance management.

Printed in Japan
VEC-0325 VN-V25U/VN-V26U

"JVC" is the trademark or registered trademark of Victor Company of Japan, Limited.