

**JVC**  
PROFESSIONAL

NETWORK CAMERA SYSTEM

VN-C1U • VN-C2U • VN-C3U  
VN-C2WU



**V.NETWORKS**  
*Visual Network System*

<http://www.jvc-victor.co.jp/english/pro/vnetworks/index-e.html>

# Put Your Eyes on V.NETWORKS

## Watch Via Your Network

These three models offer surveillance and fixed-point observation with optical 10x zoom, pan/tilt and fixed focus functions through LAN and WAN with no additional PC's.



Construction



Teller · ATM



Factory



Supermarket



Departmentstore



Warehouse



VN-C3U

- Optical 10x Zoom
- Alarm Trigger
- Pan/Tilt



VN-C2U

- Pan/Tilt



VN-C1U

- Fixed Focus

## Serve Images On The Internet Show Images on the Internet

From sightseeing location visuals and traffic information to "live" images of events, this Web browser-compatible model is ideal for providing image viewing services.



Tourism Spot Visuals



City & Street Scene Surveillance



VN-C2WU

- Web Browser Ready
- Pan/Tilt

Hardware

\* Image is simulated for display purposes.

Capture your customers' every move or your work flow at distributed or distant business sites with a 10x zoom camera.

The network camera system "V.NETWORKS" is ready to put your eyes on line with simple Ethernet connectivity.

Our two latest additions to the system: the VN-C3U with 10x zoom and the VN-C2WU with a built-in web server complete a V.NETWORKS lineup that responds to a wide range of user demands. Also the VN-S200U/100U multi-camera browsers have been released for efficient browsing of multiple V.NETWORKS.

\*1 VN-C3U \*2 VN-C2WU

## Watch multiple screens and record them with the timer function.

The multi-camera browser VN-S200U enables viewing of images from multiple V.NETWORKS. Also functions such as timer recording and sequential camera switching support more efficient surveillance and fixed-point observation.

Multi-camera browser VN-S200U is software that enables simultaneous display and image recording of multiple V.NETWORKS camera systems. Complete with timer recording function and sequential switching display functions, this software improves the efficiency of surveillance and fixed-point observation. It is capable of displaying up to 16 windows at the same time. By assigning up to 16 cameras to each window, it is possible to operate and control up to 256 V.NETWORKS from a single personal computer.



### ADVANCED MULTI-CAMERA BROWSER VN-S200U

#### <Other features>

- Up to 16 V.NETWORKS cameras can be assigned to each of up to 16 windows. A total of 256 V.NETWORKS cameras can be registered.
- Picture resolution: 160 x 120, 320 x 240, 640 x 480 (pixels)
- Time stamp & camera name display
- Automatic detection of VN-C1U/C2U/C3U
- Pan/Tilt control
- Hard-disk recording and playback
- Dial-up Connection Wizard
- Compatible operating system: Windows® 95/98, Windows NT®
- 4-window multi-browser software is available as an option for easier operation

\* Image is simulated for display purposes.



### BASIC MULTI-CAMERA BROWSER VN-S100U

**Easy-to-use software displays up to 4 windows simultaneously.**

By assigning up to 4 V.NETWORKS to each of the 4 windows, easy viewing of up to 16 V.NETWORKS cameras are possible. (Other functions are the same as those of VN-S200U.)

\* Image is simulated for display purposes.



#### ■ Timer recording

The timer function lets you schedule recording of images from V.NETWORKS directly to the hard disk of your computer. Starting and ending times for recording can be set in the range of 00:00 to 23:59.

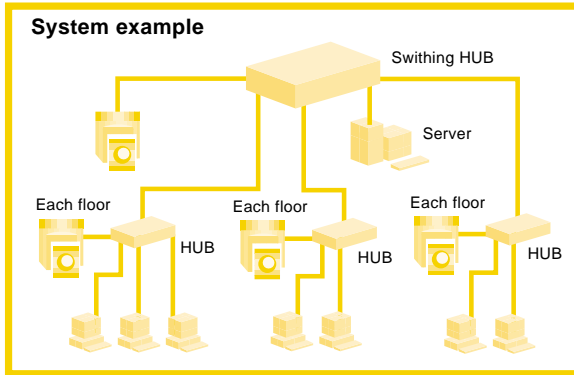
#### ■ Sequential switching

With the sequential switching display function, images from two or more V.NETWORKS can be switched automatically according to a user-specified time interval, allowing you to more efficiently monitor images from multiple cameras.

# Direct Ethernet Connectivity

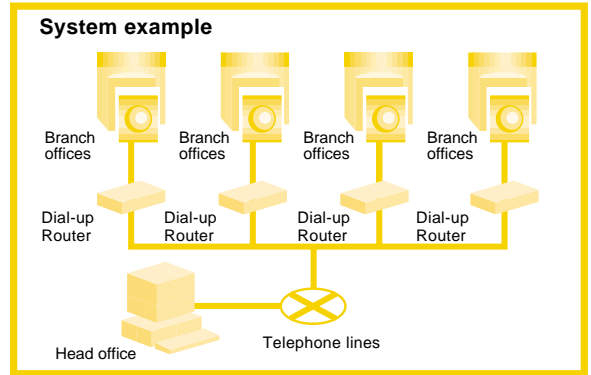
## Direct connection to the Ethernet port of Hub or Dial-up Router .

Simply connect V.NETWORKS camera to an Ethernet network using 10BASE-T cable and assign it an IP address. That is all you need to get it up and running on the LAN



network. Using a Dial-up Router, V.NETWORKS is manageable from many kinds of remote locations.

\*PCs with Windows® 95/98 or Windows NT® operating system.



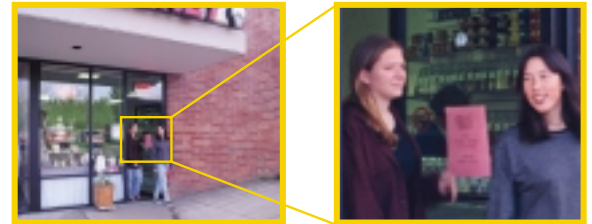
## 10x Zoom\*

### Optical 10X Zoom lets you get a close look.

Not only the High-speed Pan/Tilt function, but the optical 10x Zoom mechanism is contained inside the compact body of the VN-C3U. Control the 10x Zoom remotely and easily from your PC, and see the high quality images in detail.

\* VN-C3U only

\*PCs with Windows® 95/98 or Windows NT® operating system.

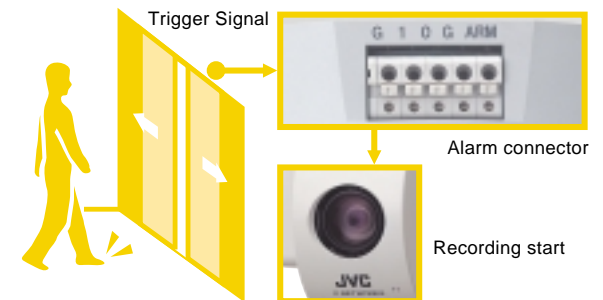


## Alarm I/O\*

### The programmable alarm function automates surveillance or recording.

The VN-C3U comes equipped with an alarm trigger connector. Using the signal output from the alarm trigger connector, you can automatically change camera's angle and zoom ratio or trigger recording.\*

\*Pre-setting of desired camera angles or zoom ratios in position memory is necessary.



●Example of system installation with alarm function

## Fast Pan/Tilt

### High-speed pan & tilt for highly responsive viewing freedom.

VN-C2U/C2WU  
Speed: 160°/sec.  
Pan: 100°  
Tilt: 80°

VN-C3U  
Speed: 100°/sec.  
Pan: 320°  
Tilt: 90°

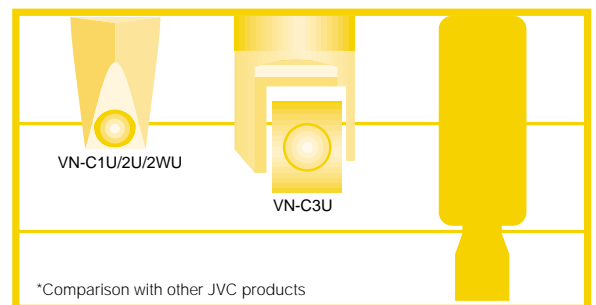


## Compact

### All advanced functions are packed in the compact body.

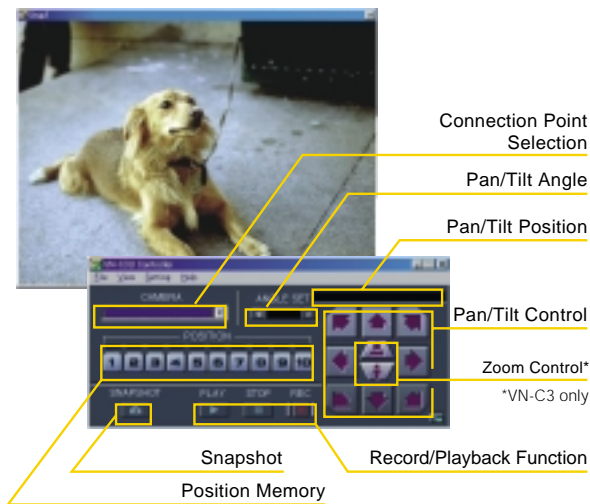
VN-C1U/C2U/C2WU  
Dimension 122(H)mm x 82(W)mm x 97(D)mm  
4 3/4"(H) x 3 1/4"(W) x 3 7/8"(D)

VN-C3U  
Dimension 166(H)mm x 110(W)mm x 110(D)mm  
6 1/2"(H) x 4 3/8"(W) x 4 3/8"(D)



# Control Software

## Image Display & Camera Control from a PC



### Still Image Storage Function

Users can take and store still image "snapshots" of selected cuts from a video image while viewing. Up to 16 "snapshots" can be simultaneously displayed.



\*Special control software is provided with VN-C1U/C2U/C3U. In the case of the VN-C2WU, a standard web browser provides similar control capability.

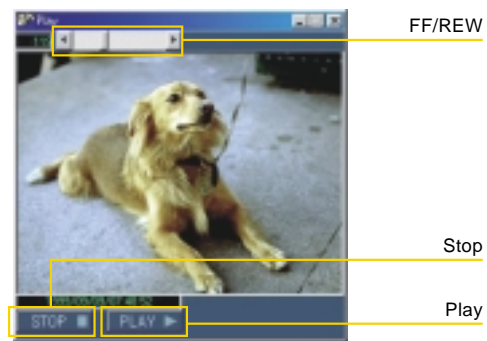
### Camera selection by IP address

Different IP addresses can be assigned to each V.NETWORKS camera. The IP address and the name of the installation point (location name, etc.) can be registered as link destinations. After registering, a pull-down menu is used to easily switch between V.NETWORKS cameras.



### Record/Playback Function

Images from the V.NETWORKS camera can be recorded on a PC hard disk and then viewed later in a playback window. A slider type controller provides easy control of fast forward, rewind and play functions.



## Web Camera\* (Built-in Web server)

View images and control cameras over the Internet using a standard web browser.

The built-in web server of the VN-C2WU allows you to distribute images captured by the camera directly to the Internet without a computer. The VN-C2WU provides convenient access to visual information via web browsers, and the integrated fast Pan/Tilt function also can be controlled from the viewer's browser. You can also easily link to a diversity of "live" visual content on a homepage. From real-time viewing of road traffic conditions to a visual update on the state of cherry blossoms in tourist areas, the possibilities of using this new system for "live" visual information services are limitless.

- Camera, JPEG compression board and Web server are all integrated in the compact body of NV-C2WU.
- Pan/Tilt function
- 3 different user levels determined by authentication of an ID/Password assigned to individual users: (1) only image browsing (2) plus operation of pan/tilt control functions (3) plus adjustment of camera picture quality.



\*Web browser compatible with both Java-script and frame display (Netscape 3.0 or higher, or Internet Explorer 4.0 or higher is required.)

## Specifications

as of March 1st, 2000

Model		VN-C1U	VN-C2U	VN-C3U	VN-C2WU
Camera	Image Sensor	1/3inch CMOS 300,000 pixels			1/3inch CMOS 300,000 pixels
	Zoom	N/A		x 10	N/A
Lens	Focal Length (f)	7mm		5.8mm ~ 58mm	7mm
	Aperture Ratio (F)	F2		F1.8	F2
	Focus	Manual		Auto/ Manual	Manual
	Min.Object Distance	1.0m ~ ∞			1.0m ~ ∞
Interface		10Base-T(Ethernet)IEEE802.3			10Base-T(Ethernet)IEEE802.3
Alarm I/O		N/A		Inputx2, Outputx1	N/A
Protocol		UDP/IP			TCP/IP, HTTP
Picture	Resolution (Pixels)	160 x 120, 320 x 240, 640 x 480			160 x 120, 320 x 240, 640 x 480
	Compression	JPEG			JPEG
Frame Rate(fps)*	160 x 120	15			12
	320 x 240	10			8
	640 x 480	5			4
Position Memory		N/A	6 positions	10 positions	10 positions
Pan/Tilt Angle		N/A	Pan:+50° ~ -50° Tilt:+5° ~ -75°	Pan:-160° ~ +160° Tilt:-0° ~ +90°	Pan:+50° ~ -50° Tilt:+5° ~ -75°
Pan/Tilt Speed		N/A	Pan:160°/s Tilt:160°/s	Pan:100°/s Tilt:100°/s	Pan:160°/s Tilt:160°/s
OS		Windows95, Windows98, WindowsNT (SP4 or later)			—
View through		JVC Controller Software			Web Browser*
Power Requirement		DC5V 0.6A	DC5V 1.4A(Max.)	DC12V 1.7A(Max.)	DC5V 1.4A(Max.)
Dimensions (H x W x D)		122mm x 82mm x 97mm (4 3/4" x 3 1/4" x 3 7/8")		166mm x 110mm x 110mm (6 1/2" x 4 3/8" x 4 3/8")	122mm x 82mm x 97 mm (4 3/4" x 3 1/4" x 3 7/8")
Weight		230g (8.2 oz.)	260g (9.25 oz.)	730g (26 oz.)	260g (9.25 oz.)

\* Frame rate varies depending on the operating environment.

\*Depends on operational environment.

\*Web browser compatible with both Java-script and frame display (Netscape 3.0 or higher, or Internet Explorer 4.0 or higher is required.)

Package Contents	VN-C1U : VN-C1U main unit, VN-C1U Controller Software, Clump filter VN-C2U : VN-C2U main unit, VN-C2U Controller Software, Clump filter VN-C3U : VN-C3U main unit, VN-C3U Controller Software VN-C2WU : VN-C2WU main unit, Clump filter
------------------	--

### <Other functions of Controller Software>

●Pan/Tilt control ●Position memory ●Playback function (movie) ●Snapshot function ●Controller display switching: Large/Small ●Resolution change ●Image inversion  
 ●Image quality adjustment: Compression ratio, frame rate, saturation, color balance, Auto/Manual switching, gain, exposure time, contrast, brightness ●Transmission frame rate selection

### Specifications of Multi Camera Browser (Optional)

Model No		VN-S200U	VN-S100U
Max. simultaneous displays		16	4
Max. no. of cameras assignable to browser		256	16
Max. no. of sequential cameras		16	4
Recommended Environment	OS	Windows95/98/NT4.0 (SP4 or later)	
	CPU	Pentium II 300 MHz or higher (Pentium III 500 MHz or higher is recommended)	
	Memory	128 MB or more	
	Required hard disk	10 MB or more	
	Display, video card	640 x 480 pixels or more, High Color (16 bits) (1024 x 768 pixels or more, True Color (32 bits) is recommended.)	

*Design, dimensions and specifications are subject to change without notice.*

# JVC

VICTOR COMPANY OF JAPAN, LIMITED

DISTRIBUTED BY