

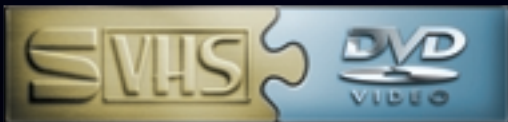
JVC®

The Perfect Experience / —

DVD VIDEO RECORDER/S-VHS VIDEO RECORDER
COMBO DECK

SR-MV50

**DVD Recorder and S-VHS VCR in One Package –
Easy-to-Use, Convenient Dual Deck with RS-232C Control**



Handy Two-in-One Design. Just Press a Button and Turn Your Library of S-VHS/VHS Tapes into DVDs.

Whether you're a professional videographer or simply looking to create a pro-grade home theater, the SR-MV50 will double your satisfaction with its two-in-one design incorporating a DVD recorder and S-VHS recorder. If you already own a library of VHS or S-VHS tapes, the SR-MV50 is the convenient way to make a smooth transition from tape to DVD media. Especially suited for use in educational institutions, this product will reduce the space taken up by tapes and let you easily create a long-lasting DVD library. What's more, it gives you a choice of three DVD recording media: DVD-RAM, DVD-RW, and DVD-R. If you're looking for smart convenience, JVC's SR-MV50 is the intelligent choice.

Smart features for

Academic or Corporate Applications



■ Auto full repeat discs can be made

The Auto Repeat function is very convenient when constant or repeated video playback is required such as when DVD discs are used for company receptions or storefront demos.

■ Simultaneous recording of two TV channels

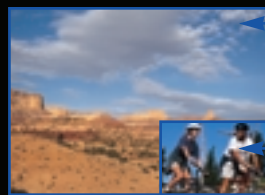
When there are two TV programs you wish to record on different channels being broadcast at the same time, the twin tuners found on the SR-MV50 will allow you to record these two separate channels onto DVD and videotape simultaneously.

■ RF Outputs

Especially useful for educational institutions, the SR-MV50 features RF output that enable you to easily connect TV sets in class room via only one RF cable.

■ Live Memory and Live Check functions

Ideal for school track and field events, Live Memory function lets you playback scenes to check any performance. With the DVD-RAM's rewriting capability, video can be recorded from a camcorder to the DVD-RAM, enabling simultaneous recording and playback. Viewing missed scenes will not interrupt the recording. The Live Check function displays real-time images in a sub-window.



Live Memory's delayed playback scene.

Live Check's real-time recording scene.

Advanced Technologies

■ Progressive scan compatibility

To allow viewing of flicker-free, high-resolution pictures on a compatible TV, DVD video signals can be output as progressive signals via component connection. Conversely, S-VHS video signals can also be output as progressive signals via the DVD recording circuit during dubbing mode.



■ S-VHS digital technologies

The S-VHS deck on the SR-MV50 features several advanced digital technology features.

- **Time Base Corrector (TBC)** removes jitter to produce a more stable picture even when old tapes are used.
- **3D YNR/CNR** improves the S/N ratio of luminance and chroma signals.
- **2MB frame memory** for high-quality still pictures and slow motion.
- **Luminance (Y) and chroma (C) signals are separated precisely by 3D Digital Y/C Separation** to suppress cross-color noise and dot-interference.

■ Crystal-clear playback

Playback quality can be improved on multi-generation tapes or tapes created on different VCRs by using the Tape Level Up and Intelligent Picture functions.

■ Digital and analog audio

Dolby Digital 2ch and Linear PCM (XP mode) digital recording are enabled on the DVD-recorder, while the S-VHS deck can record in VHS Hi-Fi audio format.

Dolby, Dolby Digital and Double-D symbol are registered trademarks of Dolby Laboratories Licensing Corporation.

Smart features for Home-theater Applications



■ RS-232C interface



An RS-232C control interface equipped with a standard DB9 connector is available for the following basic functions, making it useful for any home-theater or professional application.

- | | |
|-------------------|----------|
| • ON/OFF | • Rewind |
| • Recorder Select | • Still |
| • Play | • Record |
| • Stop | • Pause |
| • Fast Forward | • Eject |

■ Remote control code input terminal



The terminal for a remote control code input is located on the rear panel to enable remote control operation of this device by third party vendors in the future.

■ DVD and S-VHS/VHS playback

Commercially available DVDs and S-VHS/VHS tapes can be played back on the SR-MV50 for home-theater use.

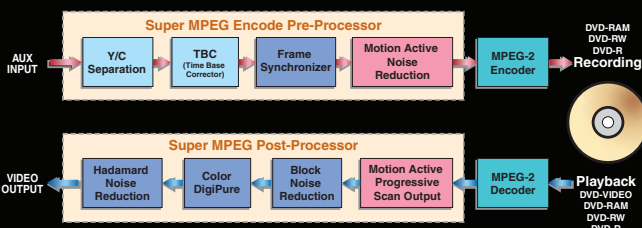
■ Super MPEG Processors

• Pre-processor (DVD)

When recording from analog sources, effective noise reduction is applied before MPEG-2 encoding to guarantee superior quality images.

• Post-processor (DVD)

Several noise reduction features work together to clean up the image. Block noise reduction cuts "block noise" caused by MPEG-2 compression, Color DigiPure reduces 3D color noise, and Hadamard noise reduction eliminates "mosquito noise" from any DVD.



Smart features for Professional Videographers



■ Last function memory

The SR-MV50 memorizes the last function in its memory and resumes operation from that point. Even if the power is turned off at the end of the day, mode settings remain valid and will be automatically recreated, making this feature especially handy for use in professional video editing studios.

■ Mode lock

Simply pressing on the remote control enter button for more than 5 seconds will disable all operation keys to prevent inadvertent operation.

■ Time counter display

The SR-MV50 displays time counter information, which is indispensable while editing or dubbing recordings, on both the DVD and S-VHS decks.

■ i.LINK connection (DV input)

Signals from external DV sources and NLE systems can be recorded via the i.LINK Terminal. These signals are converted in real-time to an MPEG-2 signal for DVD and analog video signal for VHS.



Link up with a DV camera with the i.LINK cable.

i.LINK and i.LINK logo are trademarks of Sony Corporation.

User-friendly Performance

Video output terminal with BNC connector

The BNC connector for composite video output ensures reliable and secure connection to a professional monitor.



One-touch dubbing

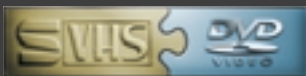
Simply pressing on the dubbing button allows easy recording from S-VHS/VHS to DVD.

Program navigation (DVD-RAM/DVD-RW VR format)

Information for up to 1300 programs, including titles, disc numbers, dates, etc., can be stored so that you always know the right disc to load when selecting a program. Choosing the desired program on the disc is as simple as clicking on the moving thumbnail image that has audio.

Closed captions available for DVD

Especially useful for educational markets, the SR-MV50 is capable of recording closed captions onto DVD media.



SR-MV50 Components

Playback formats

Disc drive: DVD-R, DVD-RW, DVD-RAM, CDDA, VCD,
CD-R (JPEG/MP3), CD-RW (JPEG/MP3)
Tape: S-VHS, VHS Hi-Fi, S-VHS ET (SP Mode only)

Recording formats

Disc drive: DVD-R, DVD-RW, DVD-RAM
Tape: S-VHS, VHS Hi-Fi, S-VHS ET (SP Mode only)

■ Front Panel



■ Rear Panel



Specifications

DVD Video Recorder

Format		MPEG-2 NTSC	
DVD Format			
	DVD-R	Rec / Play	
	DVD-RW	Rec / Play	
	DVD-RAM	Rec / Play	
	CDDA	Play	
	VCD	Play	
	CD-R	Play: JPEG/MP3	
	CD-RW	Play: JPEG/MP3	
Max Recording Times: (4.7 GB DVD)		Nominal bit rate	Approx. duration
	XP	Approx. 10 Mbps	1 hr.
	SP	Approx. 5 Mbps	2 hrs.
	LP	Approx. 2.5 Mbps	4 hrs.
	EP	Approx. 1.6 Mbps	6 hrs.
	FR60 – 480	Variable*	1 – 8 hrs.
Audio Recording System		Dolby Digital 2ch, Linear PCM (XP mode)	
S-VHS			
Format		S-VHS, VHS Hi-Fi, S-VHS ET (SP Mode only)	
Audio Recording System		VHS Hi-Fi	

General

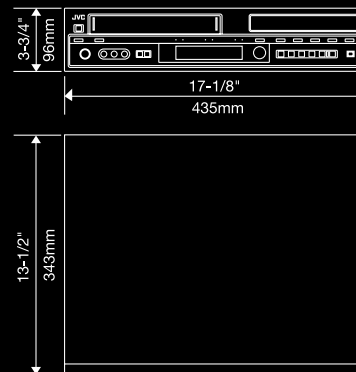
Inputs / Outputs	BNC Video Output
	DV Input (i.LINK)
	S-Y/C Input/Output
	Video Input/Output
	Audio L/R Input/Output
	Y-Pb-Pr Output
	Optical Digital Audio Out
	Coaxial Digital Audio Out
	RF Output (S-VHS, DVD)
	Remote Control Code Input Terminal
Power Requirements	AC 120V, 60Hz
Dimensions (W x H x D)	17-1/8" x 3-3/4" x 13-1/2" (435 x 96 x 343 mm)
Weight	13.7 lbs (6.2 kg)

* The amount varies depending on the selected time.

Dimensions

SR-MV50

Unit : Inches/mm



E. & O.E. Design and specifications are subject to change without notice. All brand or product names may be trademarks and/or registered trademarks of their respective owners. Any rights not expressly granted herein are reserved. Some accessories may not be available in certain areas.

Copyright © 2004 Victor Company of Japan, Limited (JVC). All Rights Reserved.



DISTRIBUTED BY

JVC PROFESSIONAL PRODUCTS COMPANY
DIVISION OF JVC AMERICAS CORP.
1700 Valley Road, Wayne, N.J. 07470
TEL: (973) 317-5000, (800) 582-5825 FAX: (973) 317-5030
Internet Web Site <http://www.jvc.com/pro>
E-mail: proinfo@jvc.com
JVC CANADA INC.
21 Finchdene Square, Scarborough, Ontario M1X 1A7
TEL: (416) 293-1311 FAX: (416) 293-8208
Internet Web Site <http://www.jvc.ca/en/pro/>

Printed in Japan
ICN-0312

"JVC" is the trademark or registered trademark of Victor Company of Japan, Limited.