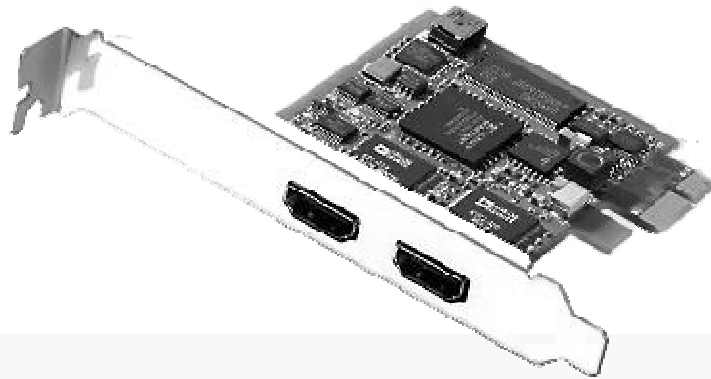


Black Magic Design Intensity Card



Capabilities:

Black Magic Design's Intensity card is an HDMI capture card. That provides: ProHD camcorder owners that have recorded 60P/50P tapes with an immediate means of ingesting 60P/50P recorded footage into popular NLE systems. When a ProHD recorded 720P60/50/30/25/34* tape is played back on a BR-HD50U** the deck's HDMI output can be applied to this capture for ingest.

This card enables on the fly ingest of :

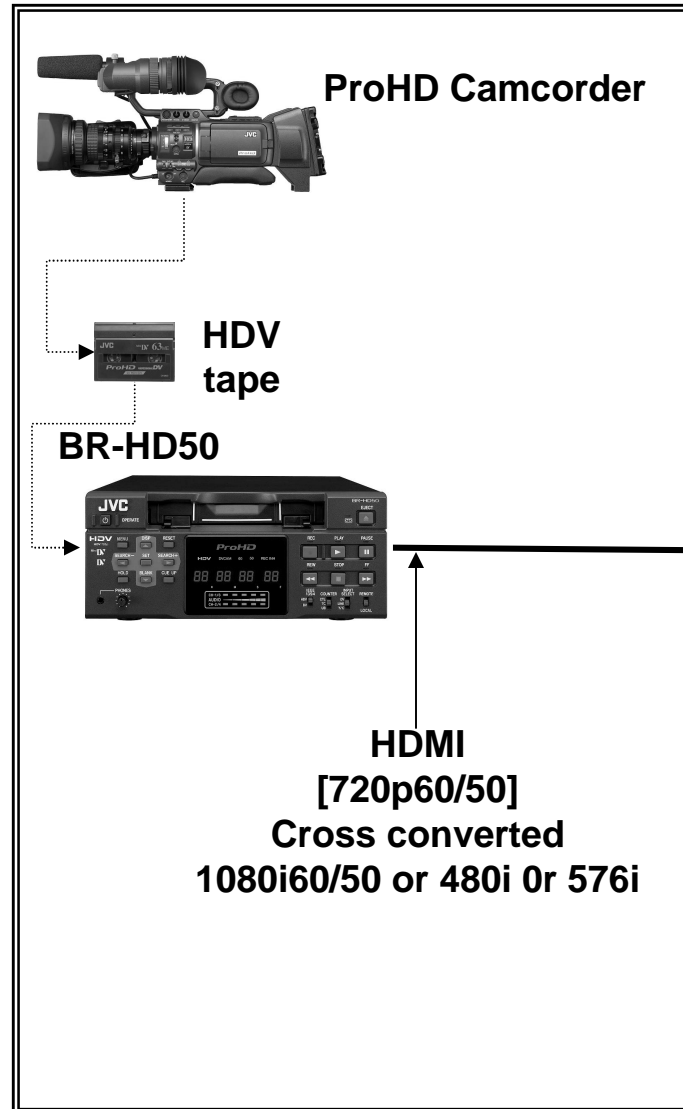
- ✍ ProHD 720P60/50/30/25/24 footage into a Windows or a Mac based NLE system.
- ✍ Since no machine control is provided Only on the fly capture from the BR-HD50U is possible.

* When playing back ProHD 720P60/50/30/25/24 footage the BR-HD50U HDMI output is 720P60. Using the BR-HD50U's cross converter, the HDMI output can be set to be 1080i60/50 or 480i or 576i.

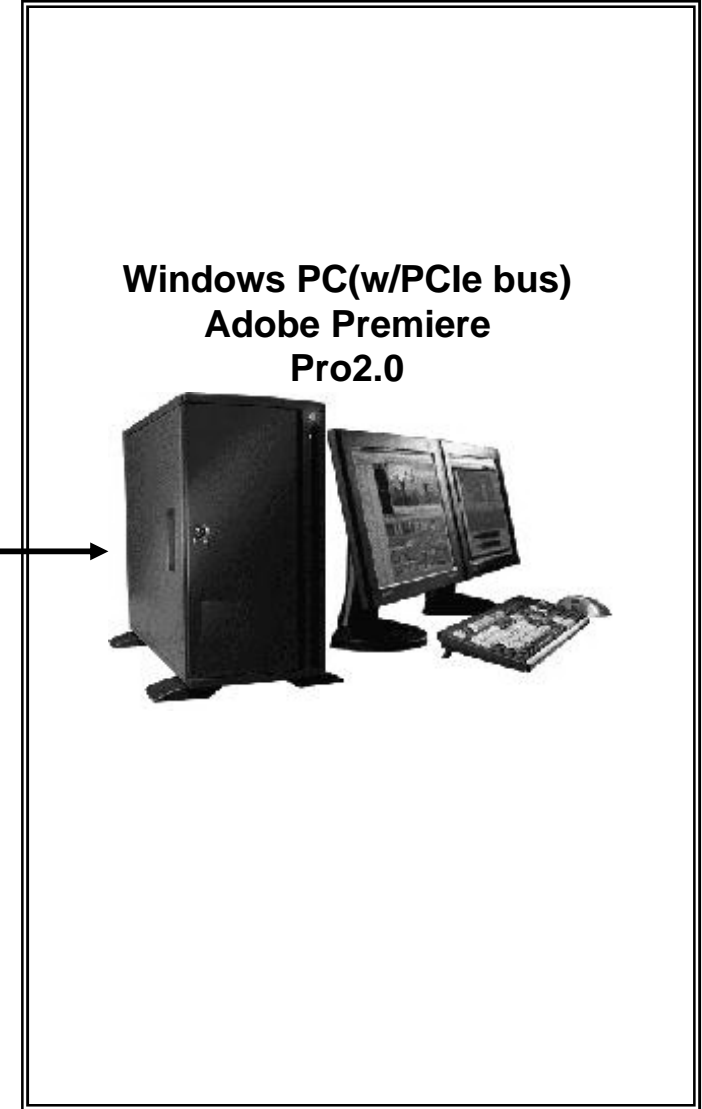
** BR-HD50U firmware version 108 is required to interoperate with the Intensity card.

Intensity card and Windows based HD Workflow

Capturing



Editing



Intensity card and Windows based HD Workflow

Requirements:

- ✍ NLE software: Adobe Premiere Pro2.0
- ✍ PC hardware: PCIe bus
- ✍ VTR control is not possible; on the fly capture only.
- ✍ BR-HD50U firmware : Ver. 1.08
- ✍ Intensity firmware: Requires driver 1.2 or later. This driver is available on Black Magic Design's website at the following URL:
- ✍ <http://www.blackmagic-design.com/support/detail.asp?techID=178>

Intensity Card and MAC based HD Workflow

Capturing



**GY-HD250
GY-HD200**

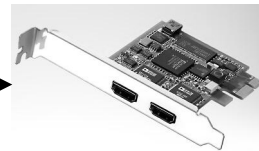
**HDV
tape**



BR-HD50



**HDMI
[720p60/50]
Cross converted
1080i60/50 or 480i Or 576i**



**Black Magic
Design
Intensity
(HDMI card)**

Editing

**Apple PC(Mac Pro)
Final Cut Pro
Ver5.1.2**



Intensity and MAC based HD Workflow

Requirements:

NLE software: Final Cut Pro5.1.2

NLE hardware: Mac Pro with PCIe bus is required

BR-HD50U firmware: Ver. 1.08 or later

VTR control is not possible; on the fly capture only

Intensity firmware: Requires driver 1.2 or later. This driver is available on Black Magic Design's website at the following URL:

<http://www.blackmagic-design.com/support/detail.asp?techID=178>