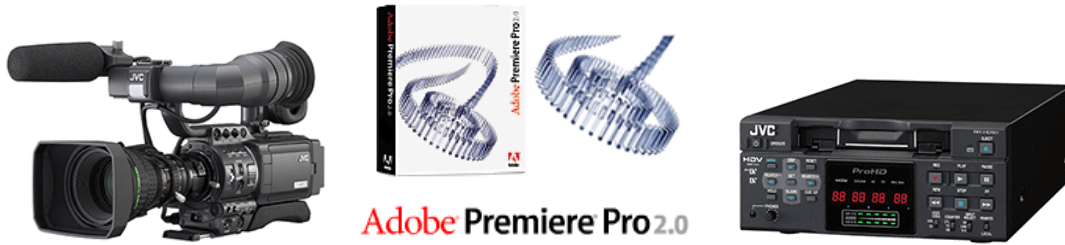


HDV 720 24p Workflow with Adobe Premiere Pro 2.0



Newly introduced **Adobe Premiere Pro 2.0** NLE software package officially supports the following HDV formats:

- HDV 720 30p
- HDV 1080 60i
- HDV 1080 50i

This new release supports HDV in native mpeg-2 format featuring excellent real-time processing capabilities, timeline scrubbing, playback and multi-layer video support. Timeline response is virtually indistinguishable from DV editing*.

HDV 720 24p support was not added to this release and, therefore, HDV 720 24p preset is not available. However, upon performing multiple tests in our lab we came to the conclusion that **HDV 720 24p capture and editing with the Adobe Premiere Pro 2.0 is possible** and can be done very easy and efficiently in native 720 24p HDV format.

What is supported for HDV 720 24p format:

- HDV 720 24p capture (batch capture) and storage in native format (approx. 9 GB per hour of 720 24p footage). Standard 250 GB HDD will store up to 27 hours of 720 24p footage!
- True 24p timeline editing.
- Real-time timeline scrubbing, forward and backwards playback (including multi-layers and high speed).
- Real-time transitions, effects and color correction.
- DTE (Direct-to-Edit) with the DR-HD100 external HDD recorder unit. (720 24p *m2t* files can be immediately imported into the project – no capture required)
- Export finished project to various formats including 4:2:2 un-compressed QuickTime, AVI, 720 24p, 1080 24p, Mpeg-2 etc.

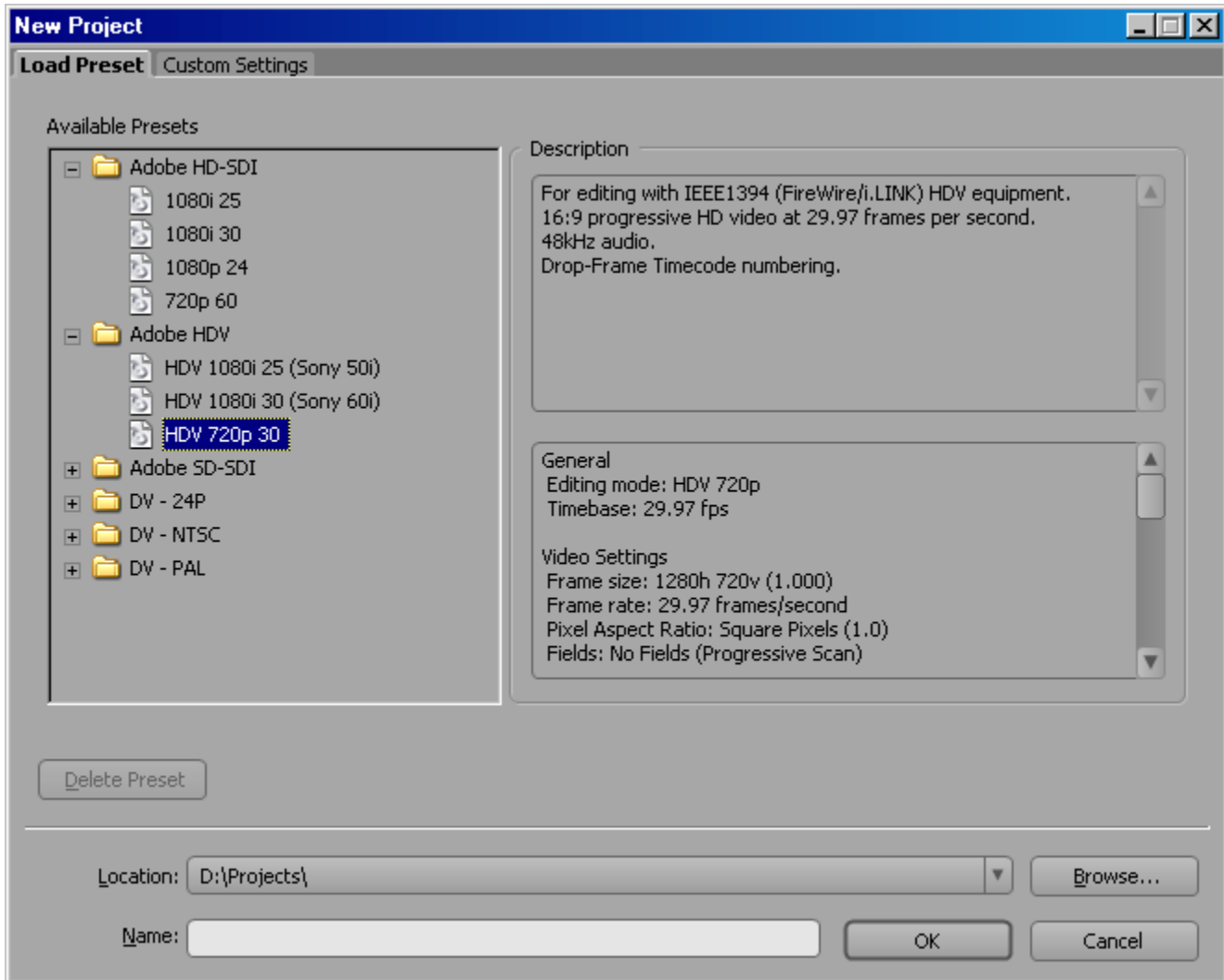
What is not supported for HDV 720 24p format:

- Export to tape in HDV 720 24p format

* PC used for testing:
Dell Precision 470 - Dual Xeon 3.4 GHz, 2 GB RAM, SATA HDD (separate drive for video), Windows XP SP2

How to capture and edit HDV 720 24p.

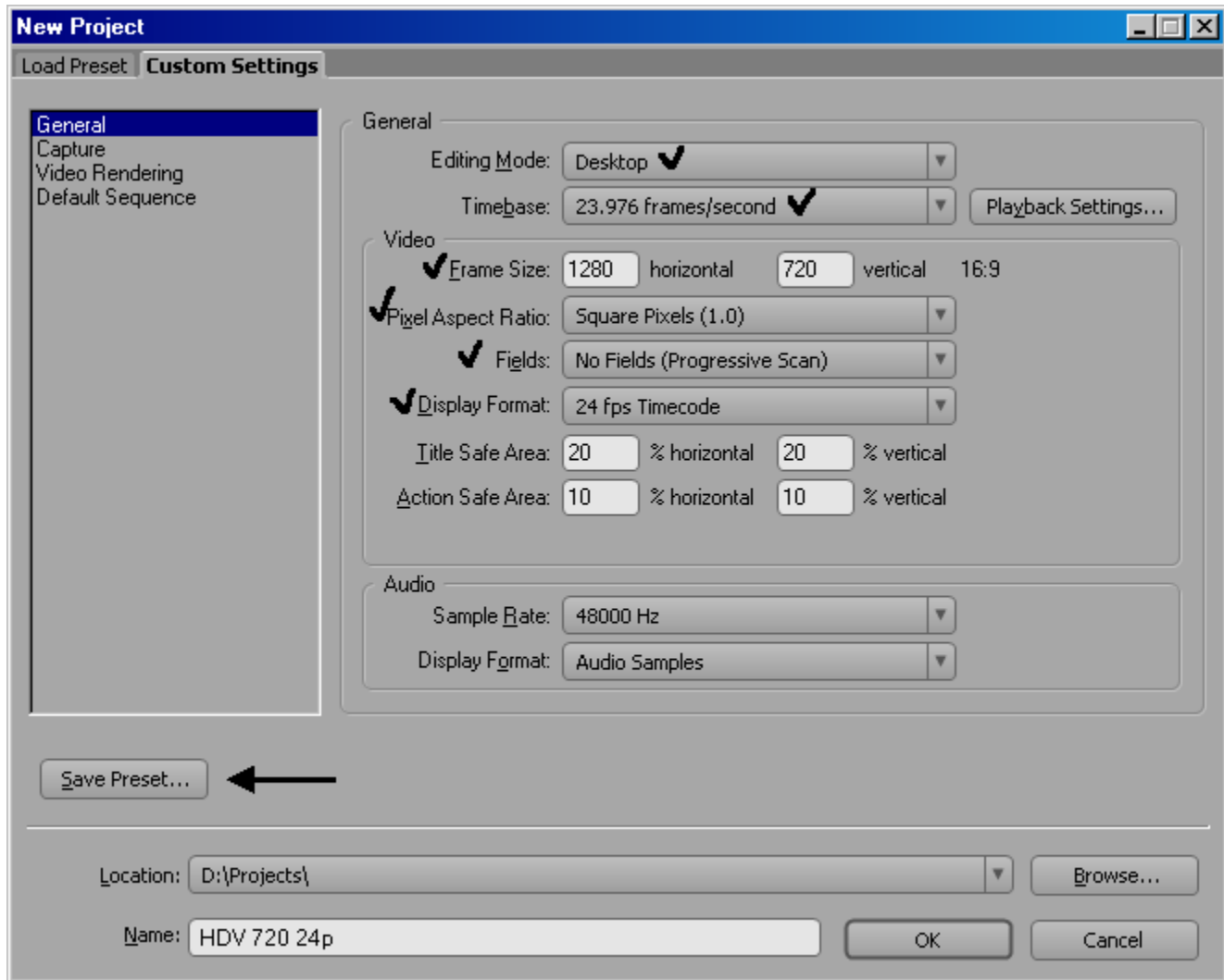
When the “New Project” option is selected the following standard presets are displayed:



In case of HDV 720 30p standard preset should be selected to assure proper capture, editing and export back to HDV tape.

For HDV 720 24p instead of using available project presets, custom preset has to be created with the following settings:

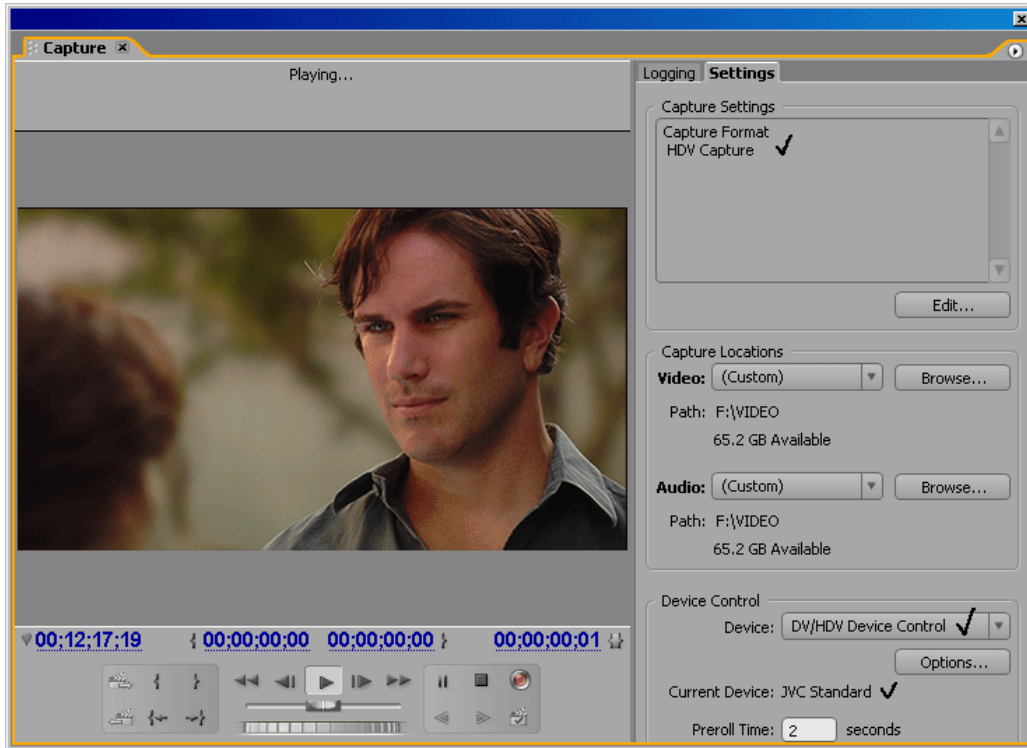
- Editing Mode** – Desktop
- Timebase** – 23.976 fps
- Frame Size** – 1280 x 720
- Pixel Aspect Ratio** – Square
- Fields** – Progressive
- Display Format** – 24 fps Timecode



This preset can be saved and will appear as “Custom preset HDV 720 24p” every time the software is launched.

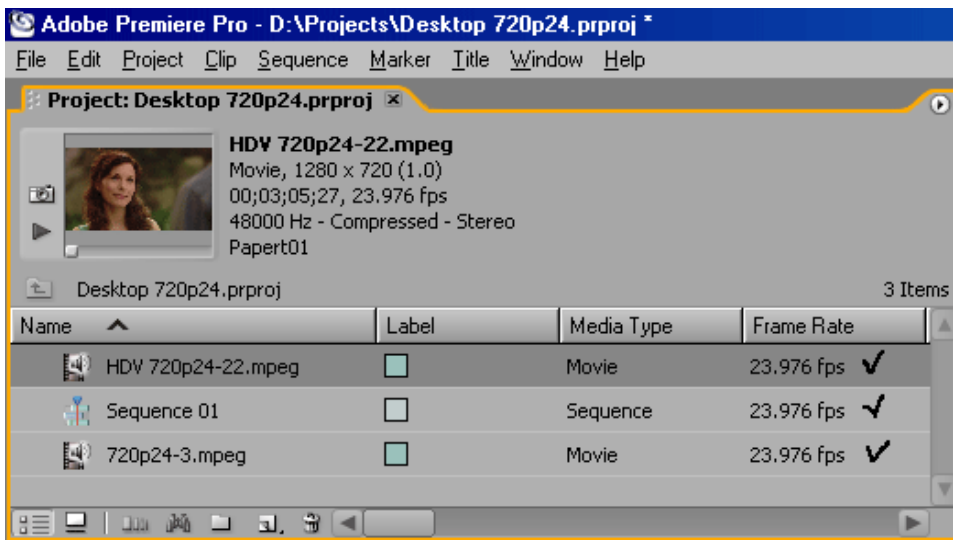
Capture Settings:

Capture Format – HDV Capture
Device Control – DV/HDV Device Control



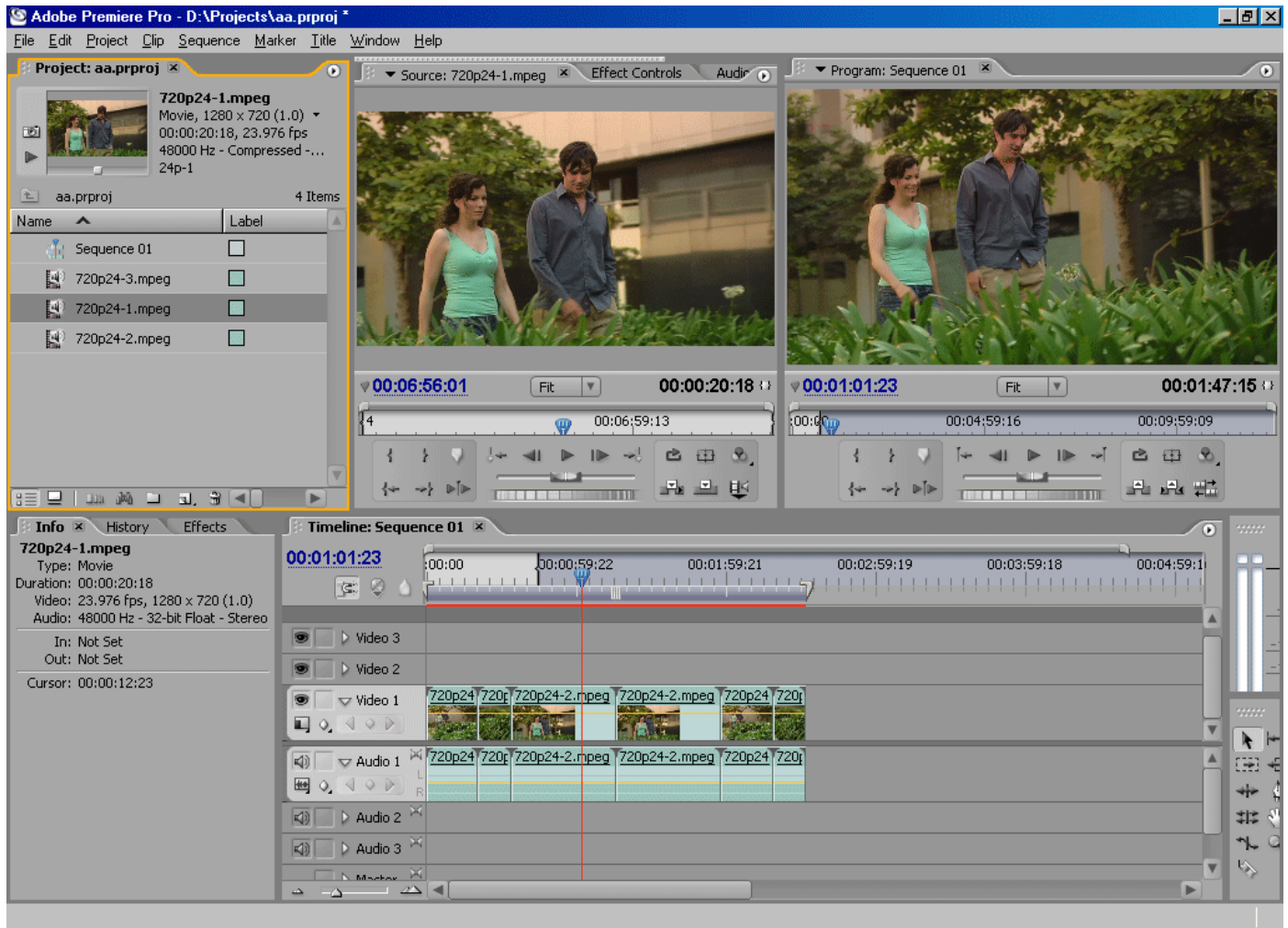
HDV 720 24p captured files will appear in a project window with correct attributes (23.976 fps, 1280x720pix etc.) and can be previewed in the source monitor in real-time.

Sequence settings (Timeline) should also have the same 24p frame rate.



Conventional editing can now be performed.

Despite the red line over the work area which indicates that project needs to be rendered, playback, timeline scrubbing, transitions, effects and color correction – are all displayed in real time.



Finished project can be saved and exported to variety of formats:

- Un-compressed 4:2:2 QuickTime and AVI
- A series of TIFF files for film-out
- HD Mpeg-2 TS and ES for SRDVD100 playback or HD-DVD / Blue Ray authoring
- Many other formats (please, refer to Adobe manual for output options)

With the addition of HD-SDI card footage can be recorded to any broadcast mastering format.

Example of export options to Progressive 24p DVD-Video Disk:



Export to un-compressed 4:2:2 QuickTime file:

