

ProHD



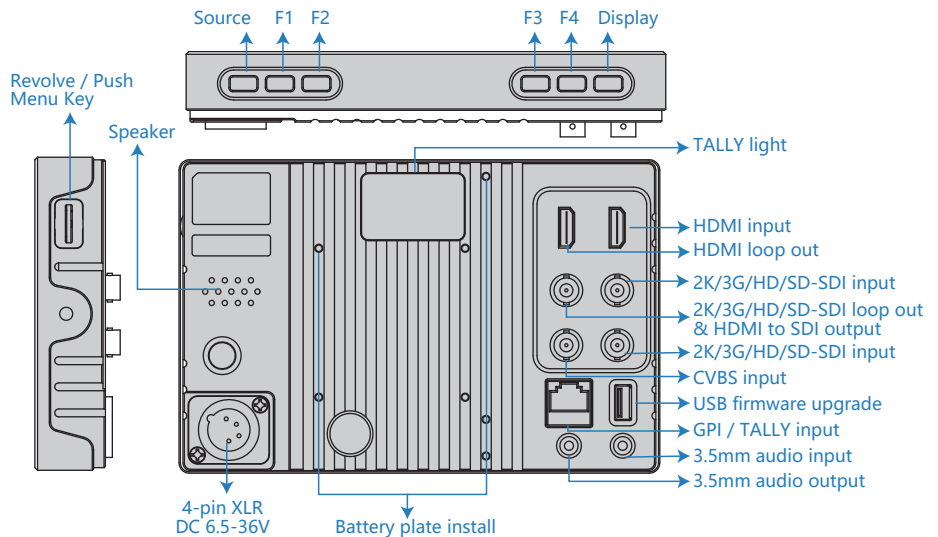
DT-X73F

7-inch Full HD Waveform LCD Monitor

NEW

HIGHLIGHTS

- ◆ 7" optical bonding LCD, 1920×1200 resolution
- ◆ All metal housing, thinner and stronger
- ◆ 2K/3G/HD/SD-SDI, HDMI and CVBS
- ◆ HDMI input converted to SDI output
- ◆ Up to 16-ch embedded audio meters with alert
- ◆ Select any 2 audio channels to output
- ◆ Waveform Y/Cb/Cr/R/G/B and single line
- ◆ Vector scope, R/G/B/Y histogram
- ◆ GPI / TALLY input and control
- ◆ Display soft TALLY and rear TALLY light
- ◆ AFD, timecode, H/V delay
- ◆ R/G/B/Mono, False color
- ◆ Zebra stripes, Peaking focus assist
- ◆ Marker 4:3, 13:9, 14:9, 15:9, 1.85:1, 2.35:1
- ◆ V-mount / Gold mount, DV battery plate install
- ◆ USB firmware upgrade

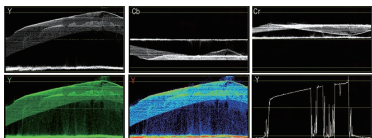


Video quality monitoring assist

Audio Meters

SDI: 16-ch / HDMI: 8-ch
 Select any 2 channel to output
 Audio abnormal alert info display
 Display only 2-ch, 8-ch, or full 16-ch
 Chart position / Translucent adjust

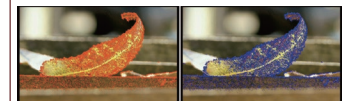
Waveforms



Y/Cb/Cr/R/G/B with single line selection
 White / Green / False color display
 Larger size waveform in center
 Chart position / Translucent adjust



Peaking Focus Assist



Red / Blue lines select

Vector Scope

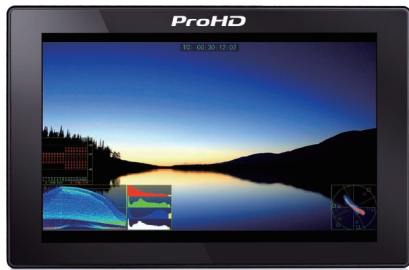
White / Color / False color display
 Larger size vector pattern in center
 Chart position / Translucent adjust

Histogram

R/G/B/Y histogram display
 100%-107% Over-exposure alert

Scale Markers

4:3, 13:9, 14:9, 15:9, 1.85:1, 2.35:1 markers
 Mask background translucent adjust



Compatible video formats

SDI	SMPTE ST 2048-2	2048×1080p (23.98 / 24 / 25 / 29.97 / 30 / 50 / 59.94 / 60) 2048×1080i (50 / 59.94 / 60)
	SMPTE-425M (Level A&B)	1080p (60 / 59.94 / 50)
	SMPTE-274M	1080i (60 / 59.94 / 50)
		1080p (30 / 29.97 / 25 / 24 / 23.98)
	SMPTE-RP211	1080psf (30 / 29.97 / 25 / 24 / 23.98)
	SMPTE-296M	720p (60 / 59.94 / 50)
	SMPTE-125M	480i (59.94)
HDMI	ITU-R BT.656	576i (50)
		480i / 576i / 480p / 576p
		720p (60 / 59.94 / 50)
		1080i (60 / 59.94 / 50)
		1080psf (30 / 29.97 / 25 / 24 / 23.98)
CVBS		1080p (60 / 59.94 / 50 / 30 / 29.97 / 25 / 24 / 23.98)
		NTSC / PAL

Specifications

LCD Display		General	
Size	7 inches	Working voltage	DC 6.5V-36V
Display area	151.2×94.5mm	Power consumption	12W
Resolution	1920×1200 (323PPI)	Working temperature	-10°C - +50°C
Color depth	8-bit, 16.77 million color	Working humidity	10% - 90%
Aspect ratio	16:9 (4:3 adjustable)	Storage temperature	-15°C - +60°C
Brightness	450cd/m ²	Storage humidity	10% - 90%
Contrast	1200:1	Dimensions	184×120×33mm
Viewing angle	H 160° / V 160°	Net weight	650g
Backlighting	LED		

Standard Package



Sun hood
Snap-on mounting
and foldable



Battery plate
SSL-DV battery plate
(GY-LS300, HM600/650 battery)



Arm trestle
Shorter and stronger arm
1/4" bolt and Cold shoe



AC-DC power adaptor
AC 100-240V, 50/60Hz
4-pin XLR



HDMI cable
Standard HDMI-A, 60cm length

ProHD

E. & O.E. Design and specifications subject to change without notice
Copyright 2016, JVCKENWOOD Corporation. All Rights Reserved.
Manufactured by SWIT Electronics Co., Ltd.

Distributed by:

