

JVC®

The Perfect Experience / —

D-ILA® HD Projection Systems
DLA-HD10KU
DLA-HD10KSU

D-ILA®



A Dream Come True

Ultimate Home Theater Performance with
Full HD Pictures and Stylish Design



Being able to watch a movie at home, while enjoying the same superior resolution and excellent color reproduction that you get in a movie theater, is a dream shared by film buffs the world over. Now, with JVC's DLA-HD10KU/KSU, that dream has come true. Thanks to our original D-ILA device, everything from skin tones to the rough texture of a rock is reproduced with pristine, film-like quality. With such extraordinary realism, you won't just watch a movie, you'll experience it as if you were really there.

Fill Your Screen With The Amazing Film-Like Quality Of Full HD Images.

— Indulge in the ultimate visionary experience.





Film-like Images and Excellent Color Reproduction

3 D-ILA chip imaging with native 1080p resolution

JVC's D-ILA imaging chips with native 1920 x 1080 resolution utilize "Non-Moving" mirror reflective technology to produce the full HD resolution you need to enjoy Hollywood films at their very best.



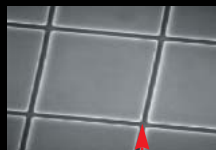
HD D-ILA device

Smooth picture/D65 color temperature

At only 0.35 μm , the gaps between pixels are so narrow that no grids appear on the picture surface. As a result, the outlines of people, animals, and other objects are extremely smooth and natural.

Reference standard D65 color temperature ensures accurate color reproduction of video, CG, or film-originated programming. D65 performance and dynamic range is adjusted by an illumination system with RGB-optimized f-number. In addition, with a high contrast ratio of 2500:1, high quality images with deep black tones and great depth can be reproduced.

Enlarged picture of the D-ILA imaging device



Fine pixel gap of 0.35 μm

Advantages of 3-chip D-ILA technology

JVC's original D-ILA technology

- Three D-ILA chips for smooth, flicker-free high-resolution images**
 JVC's original 3-chip D-ILA (Direct Drive Image Light Amplifier) technology produces clear, natural images without the annoying flicker or "rainbow effect" that plagues single panel projectors. Images are as smooth as film, boasting incredible detail.
- Cinema-quality picture with no visible grid**
 There is no visible grid or "screen door effect" with JVC's D-ILA so you can enjoy the beauty of film-like resolution.
- Professional-standard gray scale reproduction**
 JVC's exclusive AG (Analog Gradation) technology produces highly accurate gradations with low noise, particularly in darker areas with less than 20% brightness. The quality of gray-scale reproduction is further enhanced by high 2500:1 contrast that ensures high-precision, high-quality pictures without black paint even when the scene on screen is dark.
- Superior color reproduction**
 JVC's unique optical engine produces rich, natural colors with smooth gradations and low noise. Color temperature is set at D65, providing optimal cinema-style reproduction. As the D-ILA's liquid crystals are aligned vertically, the pixels are "normally black" when no voltage is applied. As a result, D-ILA technology reproduces blacks that are truly black. It also offers a uniform response, irrespective of brightness, displaying a wide range of intermediate tones.

Comparison of gradation characteristics

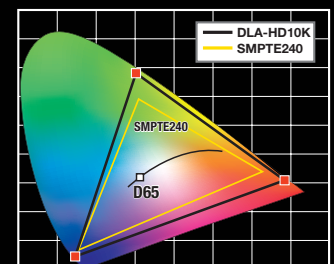


D-ILA (accurate colors with absolute white and black)



Conventional projector (bluish white and reddish black)

DLA-HD10KU/HD10KSU Color Coordinates



Sleek Design and Easy Setup

Designed to impress with a sleek stylishness that will attract envious glances in any home theater, these flagship projectors offer the flexibility you need for home installation. Both long-focus and short-focus models are available, and each features a lens shift function to ensure the highest degree of installation flexibility.

Flexible installation

To accommodate the widest variety of theater sizes, two models are available, each offering a different range of lens throw distances. The DLA-HD10KSU has a lens throw ratio of 1.5 – 2.1:1, while the DLA-HD10KU has a lens throw ratio of 2.0 – 3.8:1. Precision high-resolution all-glass lenses with motorized zoom and focus make installation a snap, while installation flexibility is further enhanced by lens shift capability. This allows the light path to be adjusted according to the installation position, even when installed on a ceiling or table.

Low fan noise design

Any external noise can be annoying when you are trying to enjoy a movie. That's why JVC has developed an original new airflow design that provides optimum cooling while keeping the noise level down to a near silent 27 dB. Thanks to this low fan noise design, subtle sounds in quiet scenes on-screen are not overwhelmed by outside noise.



Stylish design suitable for high-end home theater

Designed as the centerpiece of the movie fan's ultimate space, this projector adds a touch of elegance and beauty to any home theater. The projector's gorgeous alumite finish compliments the grandest home theater décor.

Cost-effective NUP Lamp

To keep running costs down, the DLA-HD10KU/10KSU projector uses a low-cost, long-life 200 W ultra high-pressure mercury lamp. The lamp can be easily replaced without removing the projector from the ceiling, and should be replaced approximately every 2000 hours.

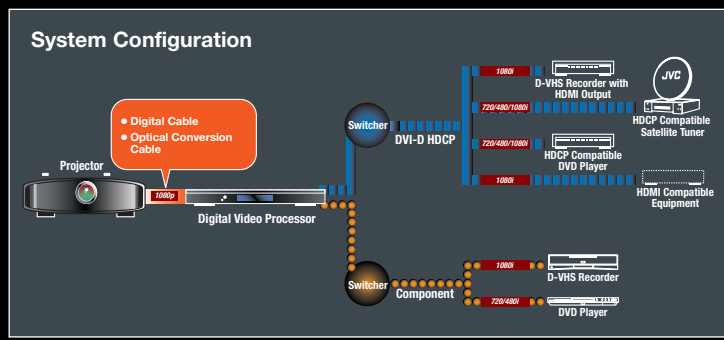
Exclusive Digital Video Processor

The DLA-HD10KU/KSU is equipped with a digital video processor co-developed by Faroujda®, a company renowned worldwide for creating powerful processing technologies. This exclusive JVC digital video processor can be connected to various sources including 480i, 480p and 576i SD signals as well as 720p, 1080i and 1080p HD signals. Faroujda's color matrixing provides accurate color profiles for NTSC and HDTV, allowing the process to convert standard analog and digital DVI video signals to a high-resolution digital video signal that can be transmitted via the DVI-D connector to the projector and is fully HDCP compliant. This processor also allows for detailed video adjustments to suit viewer preferences, and user setup between it and the projector can be profiled. Furthermore, the processor features motion adaptive de-interlacing with DCDi and 3:2 pull-down technology to ensure error free progressive signals.



Convenient 2-piece installation

The lightweight 37-lb. Projector is located in the theater itself, while the critical Digital Video Processor is mounted in the equipment rack adjacent to the video sources. Only one digital interface cable or optical conversion cable is required between the processor and projector, ensuring that maximum signal integrity is maintained.



Specifications

Projectors	
Image Device	3-chip D-ILA® (0.82-inch diagonal)
Aspect Ratio	16:9
Throw Distance (16:9)	Short focus: 6.43 ft to 30.57 ft (1.9 m to 9.3 m) Long focus: 8.46 ft to 49.23 ft (2.5 m to 15.0 m)
Screen Size (16:9)	60" to 200" diagonal
Resolution	1920 x 1080 pixels (16:9) x 3 chips; Total resolution: 6,220,800 pixels
Projection Lens	Short focus: 14X zoom lens (1.5 - 2.1:1) Long focus: 1.9X zoom lens (2 - 3.8:1) Power zoom/focus, 0 - 60% offset with manual shift
Brightness	600 lumens
Input Signals	1080/60p, 1080/50p, 1080/48p* (auto switches) <small>* Visit: www.jvc.com/pro for details of 1080/48p specifications.</small>
Lamp	200 W NUP (Model No.BH5008-S)
Contrast Ratio	2500:1
Color Temperature	D65/user selectable 1/user selectable 2
Gamma Control	Normal, A, B, and CUSTOM
Noise Level	27 dB
TERMINALS	
Input	DVI (HDCP compatible DVI-D) x 1
Serial Control	RS-232C x 1, screen trigger (12 V) x 1, service x 1
GENERAL	
Power Requirement	100 V - 240 V AC, 50/60 Hz
Power Consumption	350 W (5 W at standby)
Operating Temperature	41°F to 90°F (+5°C to +35°C)
Calorific Power	1149 kJ/h (1089 Btu)
Dimensions (WHD)	20-1/4" x 7-11/16" x 22-1/16" (513 x 193.7 x 558.5 mm)
Weight	Approx. 37 lbs. (17 kg)

Digital Video Processor	
Input Signals	480/60i, 480/60p, 576/50i, 576/50p, 720/50p, 60p, 1080/50i, 60i, 1080/48p, 50p, 60p (through)
TERMINALS	
Input Terminals	RGBC (BNC) x 1 (Common use for YPbPr) DVI (HDCP compatible DVI-D) x 1, Video (BNC) x 1, Y/C (Mini DIN) x 1, YPbPr (BNC) x 1 (Common use for RGBC),
Video Output Signals	1080/60p, 1080/50p
Video Output Terminals	DVI (HDCP compatible DVI-D) x 1* <small>* Terminals other than DVI are not used for D-ILA HD Projection System.</small>
Control Terminals	RS-232C (D-sub 9-pin) x 1, DC 12 V trigger terminal (mini jack) x 1
GENERAL	
Power Requirement	100 V - 240 V AC, 50/60 Hz
Power Consumption	35 W
Dimensions (W x H x D)	17-1/4" x 1-25/32" x 11-15/16" (438 x 45 x 303 mm) without protrusions
Weight	13.9 lbs. (6.3 kg)

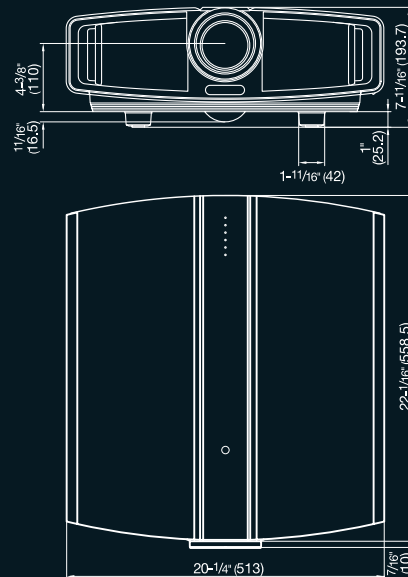
Throw Distance vs. Screen Size

Screen Size			Short-focus Zoom (1.5 to 2.1: 1 lens, aspect ratio: 16:9)				Long-focus Zoom (2.0 to 3.8, aspect ratio: 16:9)			
			Wide		Tele		Wide		Tele	
Diagonal	ft.	mm	ft.	m	ft.	m	ft.	m	ft.	m
60	4.36	1328	6.43	1.96	9.09	2.77	8.46	2.58	16.20	4.94
70	5.08	1550	7.51	2.29	10.59	3.23	9.91	3.02	18.96	5.78
80	5.81	1771	8.63	2.63	12.14	3.70	11.35	3.46	21.71	6.62
90	6.53	1992	9.71	2.96	13.68	4.17	12.79	3.90	24.47	7.46
100	7.26	2214	10.79	3.29	15.22	4.64	14.24	4.34	27.22	8.30
110	7.99	2435	11.91	3.63	16.76	5.11	15.71	4.79	29.98	9.14
120	8.71	2657	12.99	3.96	18.27	5.57	17.15	5.23	32.73	9.98
130	9.44	2878	14.07	4.29	19.81	6.04	18.60	5.67	35.49	10.82
140	10.16	3099	15.19	4.63	21.35	6.51	20.04	6.11	38.21	11.65
150	10.89	3321	16.27	4.96	22.89	6.98	21.48	6.55	40.97	12.49
160	11.62	3542	17.38	5.30	24.44	7.45	22.93	6.99	43.72	13.33
170	12.35	3764	18.47	5.63	25.94	7.91	24.37	7.43	46.48	14.17
180	13.07	3985	19.55	5.96	27.49	8.38	25.85	7.88	49.23	15.01
190	13.80	4206	20.66	6.30	29.03	8.85	27.29	8.32		
200	14.53	4428	21.75	6.63	30.57	9.32	28.73	8.76		

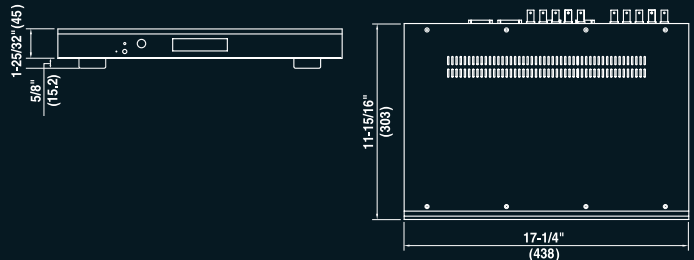
Dimensions

DLA-HD10KU/HD10KSU

Unit: inches (mm)



LD-HD2KB



Connectors

DLA-HD10KU/HD10KSU



LD-HD2KB



Provided accessories

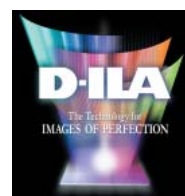
Projector:
Instructions, Power Cord, Remote Control (RM-MH10K), Two AA Batteries, Warranty Card

LD-HD2KB:
Instructions, Power Cord, DVI-D Cable (5 m), Remote Control, Two Size AA Batteries, Warranty Card

JVC®

DISTRIBUTED BY

Design and specifications subject to change without notice.
D-ILA is a registered trademark of Victor Company of Japan, Limited.
All brand or product names may be trademarks and/or registered trademarks of their respective owners.
Any rights not expressly granted herein are reserved.
All photographs and screenshots in this catalog are simulated.
Copyright © 2005, Victor Company of Japan, Limited (JVC). All Rights Reserved.



JVC PROFESSIONAL PRODUCTS COMPANY
DIVISION OF JVC AMERICAS CORP.
1700 Valley Road, Wayne, N.J. 07470
TEL: (973) 317-5000, (800) 582-5825 Fax: (973) 317-5030
Internet Web Site <http://www.jvc.com/pro>
E-mail: proinfo@jvc.com

JVC CANADA INC.
21 Finchdene Square, Scarborough, Ontario M1X1A7
Tel: (416) 293-1311 Fax: (416) 293-8208
Internet Web Site <http://www.jvc.ca/en/pro>

JVC is the trademark or registered trademark of Victor Company of Japan, Limited.