

**JVC**<sup>®</sup>  
**PROFESSIONAL**

50-INCH PLASMA DISPLAY MONITOR  
**GD-V501U**

High-Resolution, Flat Plasma Monitor  
Delivering Bright, High-Contrast  
Picture with Wide Viewing Angle



- Superb Video Picture Quality
- 3000:1 Contrast Ratio
- 16.77 Million Colors/256 Levels
- Wide Viewing Angle (160 Degrees)
- Composite Video Output
- Set-Up Timer
- 3:2 Pull Down for 24psF
- Screensavers (White Bar Scroll/Screen Reverse/Side Panel Adjustment)
- Wall/Ceiling Mountable
- RS-232C Interface
- S-VGA/XGA Compatible
- Various Set-Up Capabilities

# JVC Plasma Display — Bigger and Brighter, with Superb Color Clarity

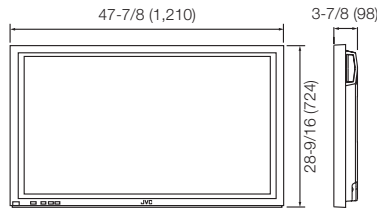
The new GD-V501U is a major addition to JVC's line-up of plasma display monitors. This latest evolution of JVC plasma technology features a big 50-inch display that provides high-resolution pictures with 1,366 x 768 pixels. All this comes with a contrast ratio of 3,000:1. The GD-V501U is also XGA compatible to present crystal clear graphics. Like other advanced plasma displays in the JVC family, the GD-V501U offers immunity to electromagnetic fields and performs confidently under strong ambient or artificial light. These attributes make the GD-V501U a powerful solution for applications at conventions, exhibitions, and outdoor events. JVC's GD-V501U — redefining the state of the art.

## Specifications

<b>PANEL</b>	
Screen size (W) x (H)	43-9/16 x 24-1/2 inches (1106 x 622 mm) wide 50-inch (diagonal)
Aspect ratio	16:9 wide
No. of pixels	1366 (H) x 768 (V) pixels
Contract Ratio	3000:1
<b>APPLICABLE SIGNALS</b>	
Color system	NTSC, PAL, PAL60, SECAM, NTSC4.43
Scanning format capability	480/60i, 480/60p, 576/50i, 576/50p, 720/60p, 1080/24psf, 1080/24p, 1080/60i, 1080/50i
PC (RGB)	VGA 75 Hz, W-VGA 60Hz, XGA 70Hz, SVGA 60Hz, SVGA 75Hz, SVGA 85Hz, UXGA 60Hz, Mac 13", Mac 21"
Scanning frequency	(H) 15.5kHz – 110kHz (V) 48Hz – 120Hz
<b>INPUT CONNECTOR</b>	
Video	Composite (BNC) 1 V(p-p), 75 ohms
	S-Video (Mini DIN 4-pin) 1.0 V(p-p), 75 ohms; C: 0.286 V(p-p), 75 ohms
	Audio (RCA Pin x 2) 0.5 Vrms, 180k ohms
Component/RGB	Y/G (BNC) 1 V(p-p), Composite, 75 ohms
	0.7 V(p-p), Non-composite, 75 ohms
	Pb/B 0.7 V(p-p), 75 ohms
	Pr/R (BNC) 0.7 V(p-p), 75 ohms
	HD (BNC) 1.0 - 5.0 V(p-p), 4.7k ohms
	VD (BNC) 1.0 - 5.0 V(p-p), 4.7k ohms
PC	Audio (RCA pin x2) 0.5 Vrms, 180k ohms
	Mini D-sub 15-pin R.G.B., 0.7 V(p-p), 75 ohms
	HD, VD, 1.0 - 5.0 V(p-p), 2.2k ohms
Serial	Audio M3 stereo plug 0.5 Vrms
	D-sub 9-pin (female)
<b>OUTPUT TERMINAL</b>	
Composite video (BNC)	Bridged out
<b>OTHER SPECIFICATIONS</b>	
EMI	FCC Class A
Speaker output	6 ohms 16W (8W+8W)
Weight	43kg
Power requirement	100 – 120V AC, 50/60Hz
Power consumption	Normal use 495±20W
	Stand-by condition 2.4W
	Power off 0.8W
Operation condition	Temperature 32°F – 104°F (0°C – 40°C)
	Humidity 20% – 80% (Non condensation)
Composite NTSC4.43	Manual

## Dimensions

Unit: inches (mm)



## Standard Accessory

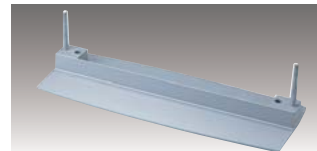


Remote Control Unit

## Input Terminals



## Optional Accessories



**Stand Unit TS-C50P1G**  
Dimensions (W x H x D):  
19-11/16 x 23-15/16 x 27-9/16 inches  
500 x 607.2 x 700 mm



**Wall Mount Unit TS-C50P2G**  
(with angle adjustment function)  
**Wall Mount Unit TS-C50P6G**  
(fixed angle type)  
\*Photo shows TS-C50P2G.



**Ceiling Mount Unit TS-C50P3G**



**Side Mount Slim Speakers TS-C5000SPG**

### Caution:

■ PDP is an ultra modern electronic device fabricated using leading-edge technology. Therefore, its effective picture elements are 99.99 percent or more, meaning 0.01 percent or less defective elements or "always ON" portion could exist. ■ Screen burn-in: Like a CRT, PDP uses phosphor; therefore, burn-in could result from long-term use such as displaying the same still picture.

Design and specifications subject to change without notice.

# JVC® DISTRIBUTED BY

**JVC PROFESSIONAL PRODUCTS COMPANY**  
DIVISION OF JVC AMERICAS CORP.  
1700 Valley Road, Wayne, N.J. 07470  
TEL: (973) 317-5000, (800) 582-5825  
FAX: (973) 317-5030  
Internet Web Site <http://www.jvc.com/pro>  
E-mail: [proinfo@jvc.com](mailto:proinfo@jvc.com)

**JVC CANADA INC.**  
21 Finchdene Square, Scarborough, Ontario M1X 1A7  
TEL: (416) 293-1311 FAX: (416) 293-8208  
Internet Web Site <http://www.jvcpro.com/>

Printed in Japan  
ICN-0271