

JVC®

The Perfect Experience / —

50-INCH PLASMA DISPLAY MONITOR

GD-V502U

High-Resolution, Flat Plasma Monitor
Delivering Bright, High-Contrast
Picture with Wide Viewing Angle



- Superb Video Quality
- 3000:1 Contrast Ratio
- 16.77M Colors/256 Levels
- Full HDTV Support: 720p, 1080i and 1080 24p/24pSF
- Dual Display (Side by Side/Picture-in-Picture)
- Digital Zoom (Multi-Display/Videowall)
- Built-in Screensavers
- RS-232C Control

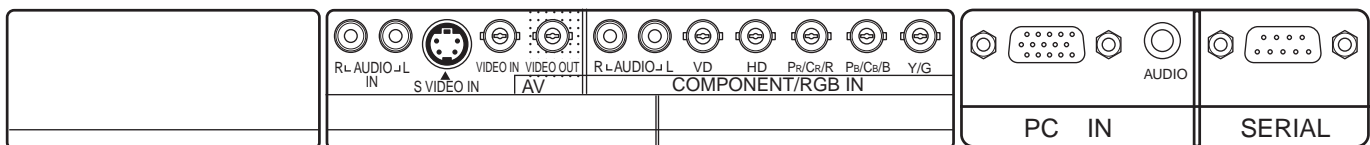
New Features, Greater Flexibility, More Applications

JVC's GD-V502U plasma display brings users new features for a wider range of applications. Besides a plasma display's benefits of high picture quality, small foot-print, wide viewing angle, immunity to electromagnetic fields and flexible mounting, JVC's multi-purpose GD-V502U offers exceptional flexibility, allowing Picture out Picture, Picture in Picture arranged side-by-side, or even four-display or nine-display matrix configurations. So the GD-V502U is ideal for exhibitions, seminars and outdoor events, as well as surveillance and presentations. The GD-V502U — delivering the big picture.

Specifications

PANEL	
Screen size (W) x (H)	43-9/16 x 24-1/2 inches (1106 x 622 mm) wide 50-inch (diagonal)
Aspect ratio	16:9 wide
No. of pixels	1366 (H) x 768 (V) pixels
Contract Ratio	3000:1
APPLICABLE SIGNALS	
Color system	NTSC, PAL, PAL60, SECAM, NTSC4.43
Scanning format capability	480/60i, 480/60p, 575/50i, 575/50p, 720/60p, 720/50p, 1080/24psF, 1080/24p, 1080/60i, 1080/50i
PC (RGB)	VGA 75 Hz, W-VGA 60Hz, XGA 70Hz, SVGA 60Hz, SVGA 75Hz, SVGA 85Hz, UXGA 60Hz, Mac 13", Mac 21"
Scanning frequency	(H) 15kHz – 110kHz (V) 48Hz – 120Hz
INPUT CONNECTOR	
Video	Composite (BNC) 1 V(p-p), 75 ohms
	S-Video (Mini DIN 4-pin) Y: 1.0 V(p-p), 75 ohms; C: 0.286 V(p-p), 75 ohms
	Audio (RCA Pin x 2) 0.5 Vrms, 180k ohms
Component/RGB	Y/G (BNC) 1 V(p-p), Composite, 75 ohms
	0.7 V(p-p), Non-composite, 75 ohms
	Pb/B 0.7 V(p-p), 75 ohms
	Pr/R (BNC) 0.7 V(p-p), 75 ohms
	HD (BNC) 1.0 - 5.0 V(p-p), 4.7k ohms
	VD (BNC) 1.0 - 5.0 V(p-p), 4.7k ohms
	Audio (RCA pin x2) 0.5 Vrms, 180k ohms
PC	Mini D-sub 15-pin R.G.B., 0.7 V(p-p), 75 ohms
	HD, VD, 1.0 - 5.0 V(p-p), 2.2k ohms
	Audio M3 stereo plug 0.5 Vrms
Serial	D-sub 9-pin (female)
OUTPUT TERMINAL	
Composite video (BNC)	Bridged out
OTHER SPECIFICATIONS	
EMI	FCC Class A
Speaker output	6 ohms 16W (8W+8W)
Weight	Approx. 97 lbs.
Power requirement	100 – 120V AC, 50/60Hz
Power consumption	Normal use 445±20W
	Stand-by condition Save OFF: 1.6W Save ON: 0.9W
	Power off 0.2W
Operation condition	Temperature 32°F – 104°F (0°C – 40°C)
	Humidity 20% – 80% (Non condensation)
Composite NTSC4.43	Manual

Input Terminals

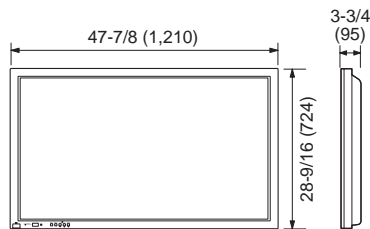


Caution:

■ PDP is an ultra modern electronic device fabricated using leading-edge technology. Therefore, its effective picture elements are 99.99 percent or more, meaning 0.01 percent or less defective elements or "always ON" portion could exist. ■ Screen burn-in: Like a CRT, PDP uses phosphor; therefore, burn-in could result from long-term use such as displaying the same still picture.

Dimensions

Unit: inches (mm)

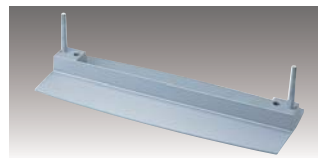


Standard Accessory



Remote Control Unit

Optional Accessories



Stand Unit TS-C50P1G
Dimensions (W x H x D):
19-11/16 x 23-15/16 x 27-9/16 inches
500 x 607.2 x 700 mm



Wall Mount Unit TS-C50P2G
(with angle adjustment function)
Wall Mount Unit TS-C50P6G
(fixed angle type)
**Photo shows TS-C50P2G.*



Ceiling Mount Unit TS-C50P3G



Side Mount Slim Speakers TS-C5000SPG



DISTRIBUTED BY

JVC PROFESSIONAL PRODUCTS COMPANY

DIVISION OF JVC AMERICAS CORP.
1700 Valley Road, Wayne, N.J. 07470
TEL: (973) 317-5000, (800) 582-5825 FAX: (973) 317-5030
Internet Web Site <http://www.jvc.com/pro>
E-mail: proinfo@jvc.com

JVC CANADA INC.

21 Finchdene Square, Scarborough, Ontario M1X 1A7
TEL: (416) 293-1311 FAX: (416) 293-8208
Internet Web Site <http://www.jvcpro.com/>

Printed in Japan
ICN-0283