



Firmware Update Manual (Ver.1.1)

for DLA-RS4800

This manual describes how to update the firmware for the DLA-RS4800 model.

****CAUTION**** Do not unplug unit while firmware is being updated.

Please carry out the update in the order shown below:

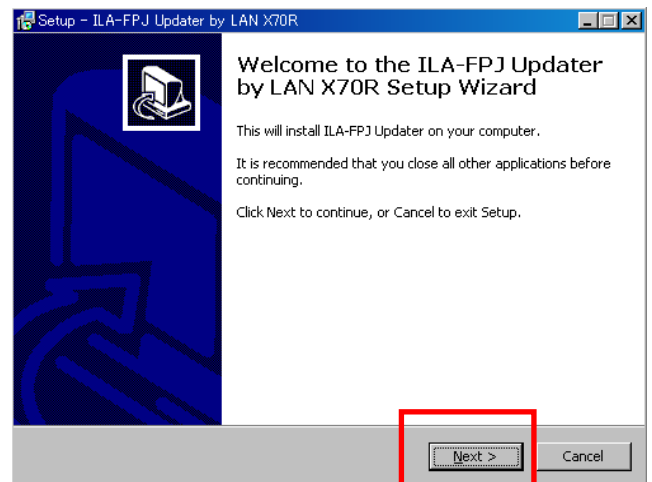
- 1 . Install Software
- 2 . Projector LAN Settings
- 3 . Projector Software Update

1 . Install Software

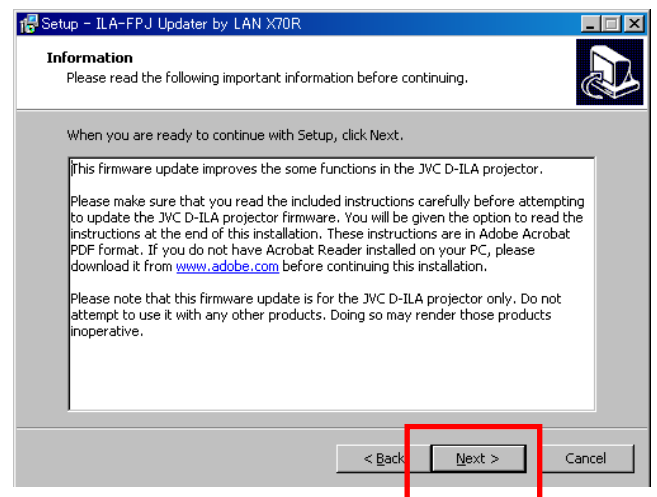
First download the projector update software from the JVC website to your desktop on your computer.
This example uses the DLA-X70R

(1) Double-click the downloaded file on the desktop. This will start the installer.

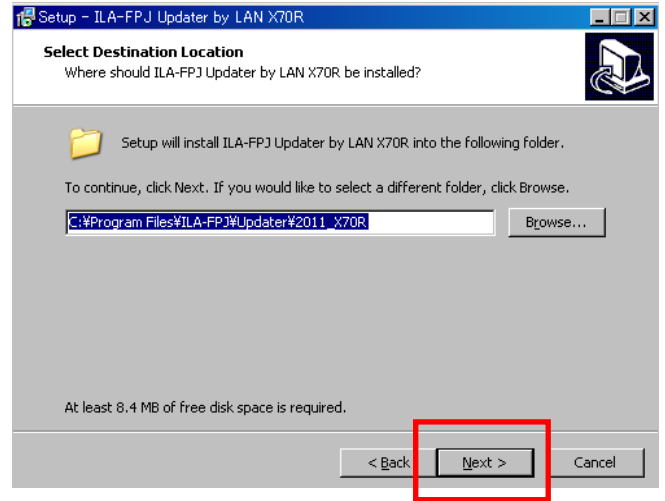
(2) The dialog box shown on the right will appear.
Click the [Next] button.



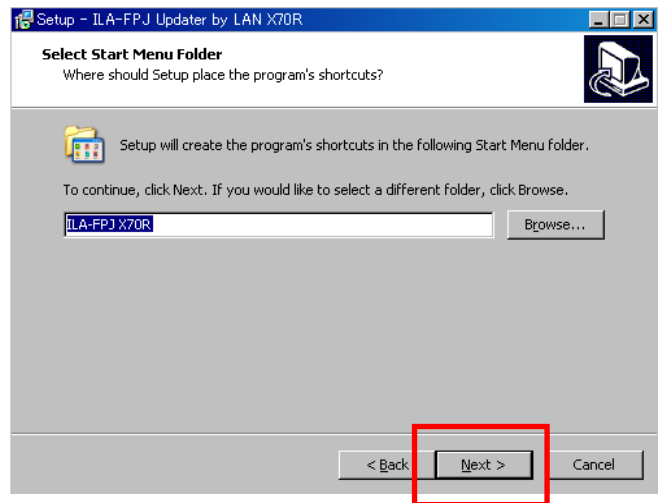
(3) The dialog box shown on the right will appear.
Click the [Next] button.



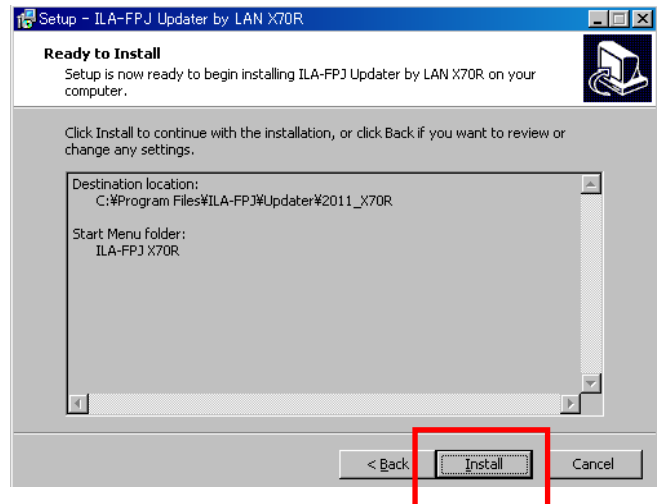
(4) The dialog box shown on the right will appear. Click the [Next] button with the destination unchanged.



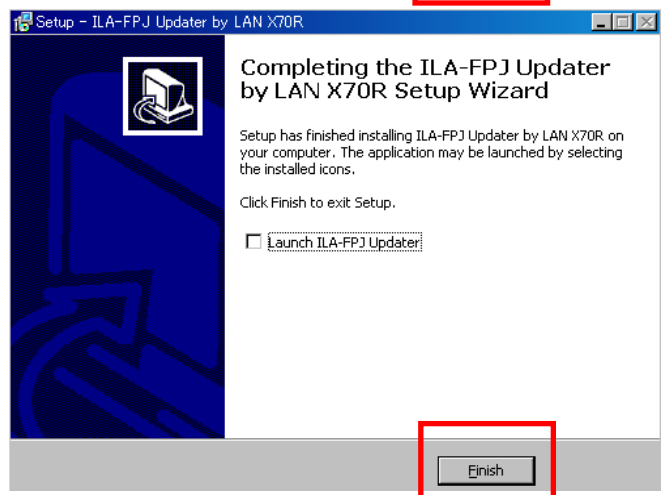
(5) The dialog box shown on the right will appear. Click the [Next] button.



(6) The dialog box shown on the right will appear. Click the [Install] button. Please wait until the installations is complete.

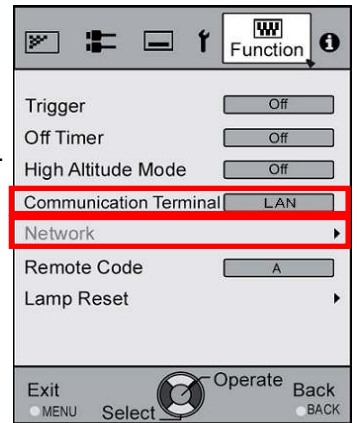


(7) The dialog box shown on the right will appear. After installation is complete, click the [Finish] button to exit the wizard.



2. Projector LAN Settings

- (1) Connect the projector to a PC with a LAN cable.
- (2) Connect the power cord to the projector and turn on.
- (3) Set "Communication Terminal" under the "Function" tab in the menu to "LAN".
- (4) Open "Network" item under the "Function" tab in the menu.



(5) Projector Network Settings

Set the "DHCP Client" to "Off".

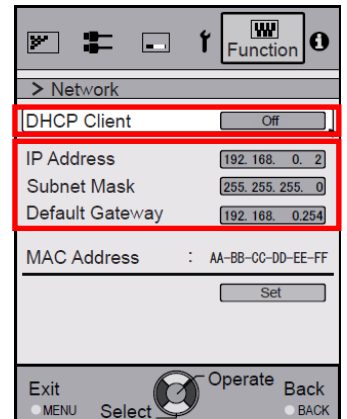
Set the "IP Address" of projector to an address different from that of the PC.

Recommended No. : PC [192 168 0 1]
Projector [192 168 0 2]

Set the "Subnet Mask" and "Default Gateway" of projector to the same values as the PC.

Press "Set" followed by OK to apply the new settings.

Recommended No. : Subnet Ma [255 255 255 0]
Default Gati [192 168 0 244]



Press [SET] by followed OK. The dialog box shown below will appear.

Press [Yes] to apply the new setting.



***Please make sure that the IP address chosen for the projector is unique.
This is essential for correct operation.**

Please make sure the PC is connected directly to the projector.
Except for the PC and the projector, there should be no other devices on the (LAN) network.

3. Projector Software Update

The software is accepted when the projector in STAND-BY Mode.

For example DLA-X70R

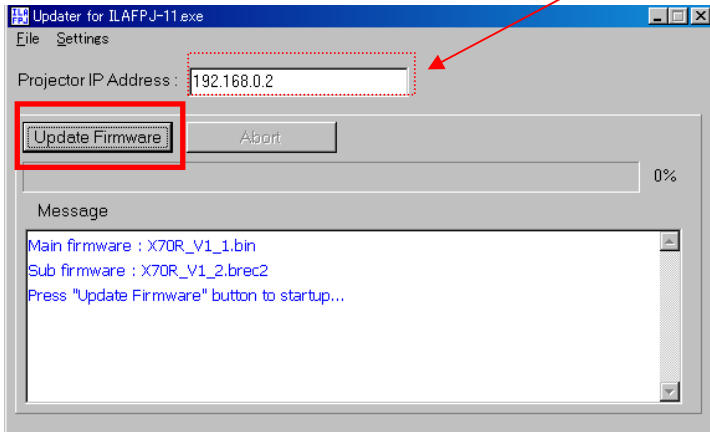
(1) Click "Start" on PC → Select "ILA-FPJ X70R" from "ALL programs"

This will start the ILA-FPJ Updater.

Press [Update Firmware]

Note:

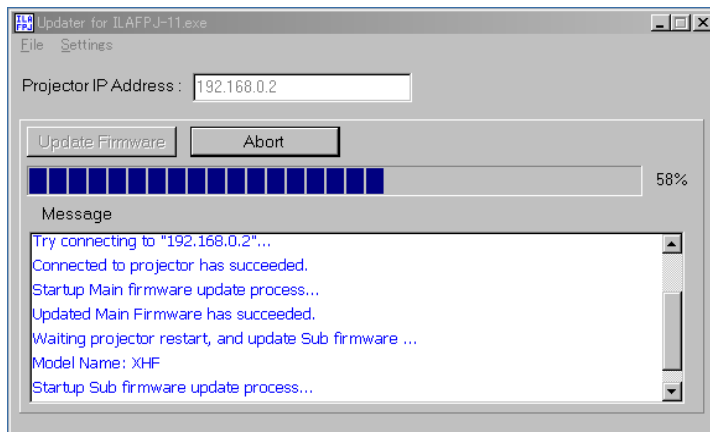
Set IP Address to projector's IP address if required.



If a Windows Firewall warning message appears, please select "Unblock".



(2) The software update will start. Please wait until it is finished.



Caution:

Do not unplug the cable while the update is in progress.

The first part of the update (Main Firmware) will proceed quickly.

The second part of the update (Sub Firmware) will proceed very slowly.

The entire update process will take over 10 minutes. Please continue to wait.

The STANDBY indicator display lights Orange when starting the update. Then the three LEDs will light up.



Close Up LEDs



After the progress bar reaches 100%, the three LEDs will begin flashing. Please continue to wait.



After a while, the STAND-BY light will light Red. The others will be off.



Close Up LEDs



(3) The update has been completed. Close the update program.

(4) After updating, remove the power cable from the projector, wait until all lights go out, then reconnect power.



Close Up LEDs



Please check that the software version: 28.056 has been updated after finishing the update. The version number is available in the Information tab of the projector menu.