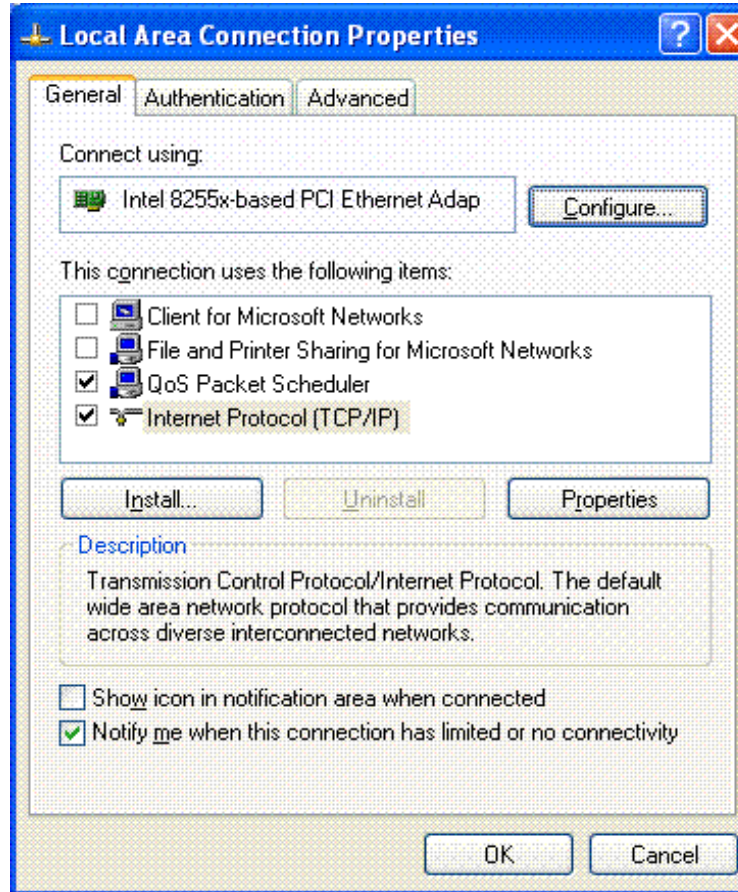
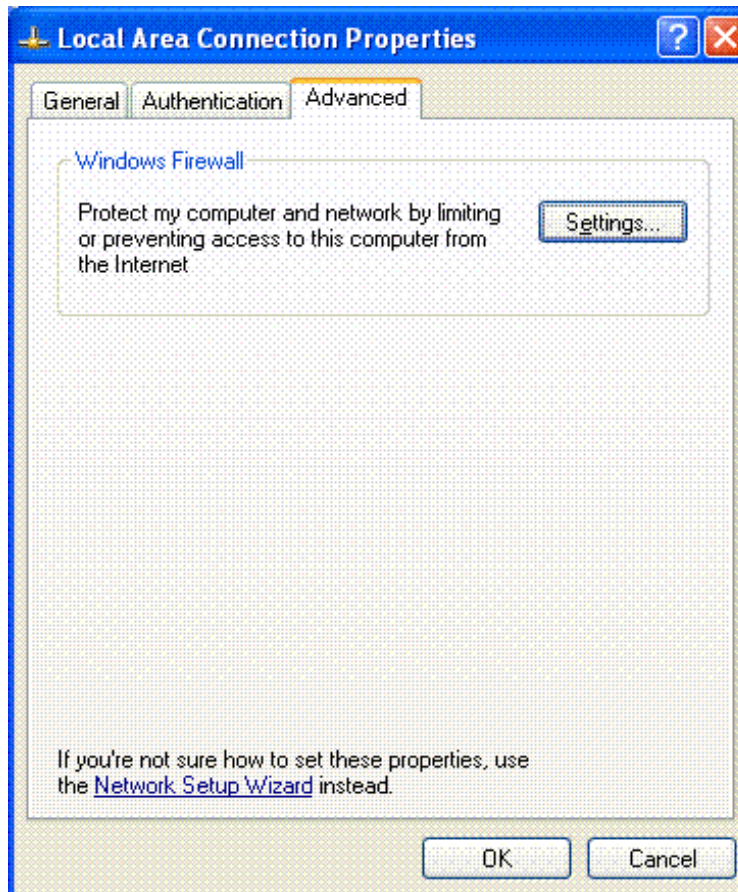


Windows XP Service Pack 2 (SP2) Configuration for Streamproducer

1 Open LAN Property.

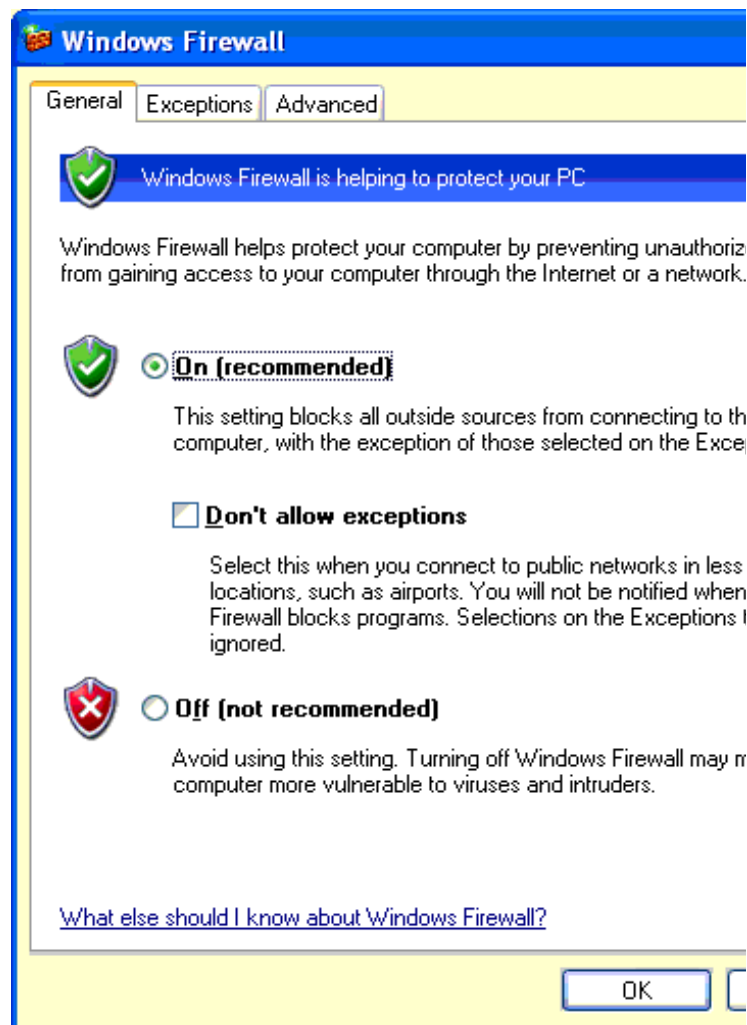


2 Select "Advanced" tab.

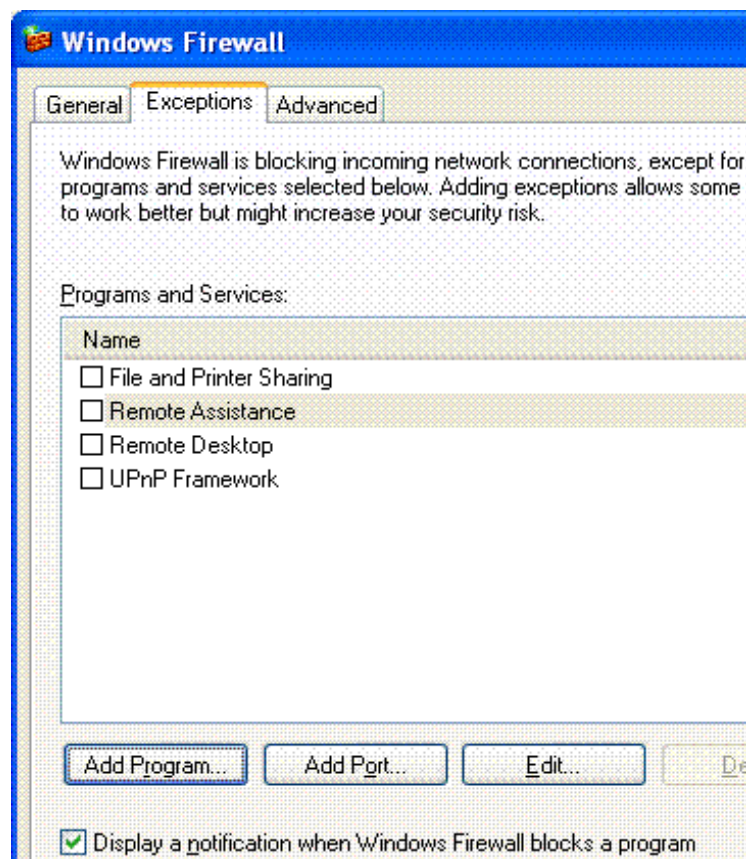


3 Click "Settings".

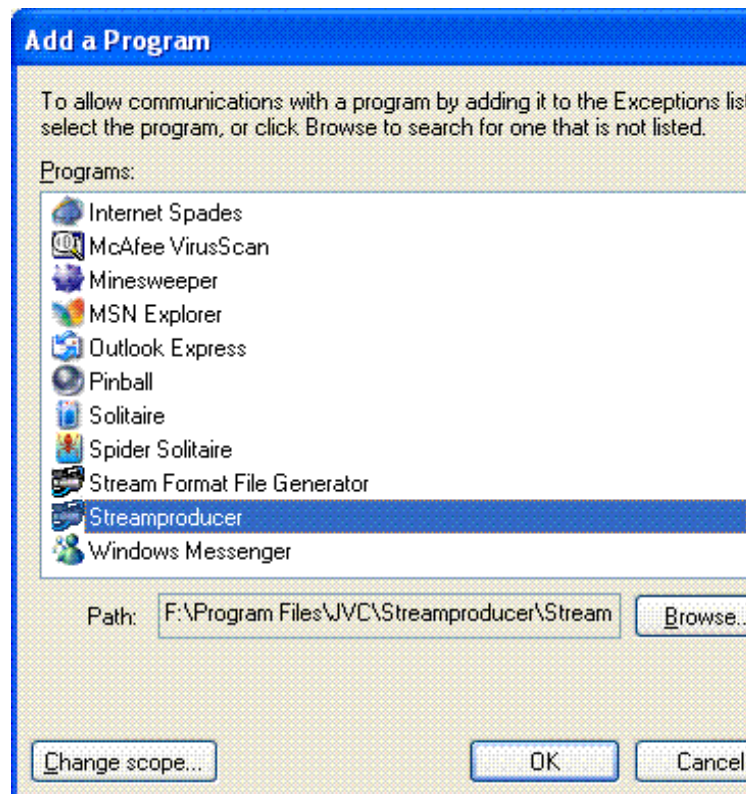
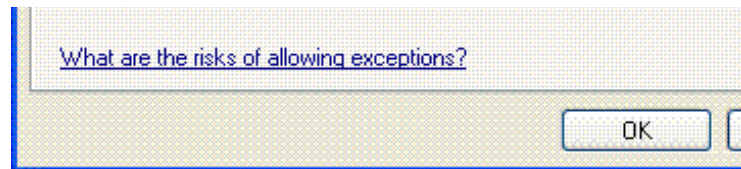
4 Select "Exceptions" tab.



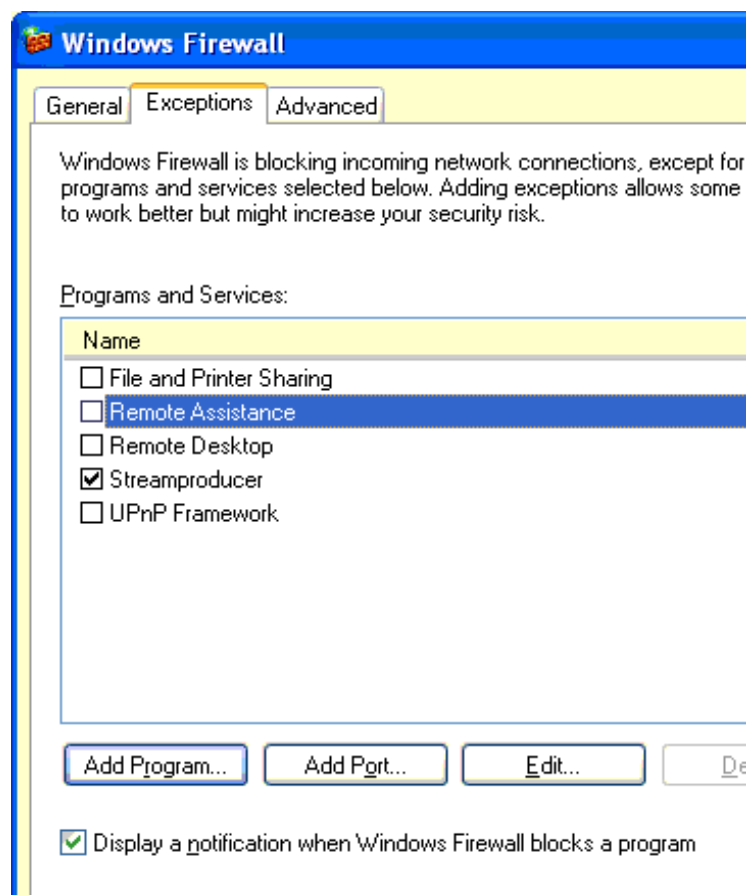
5 Click "Add Program".



6 Select "Streamproducer".
Then click "OK".



7 Click "OK"



Complete!

[What are the risks of allowing exceptions?](#)

OK



