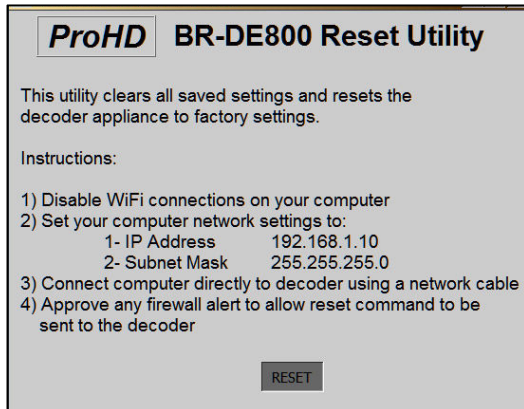


BR-DE800 - IP Address Recovery / Reset

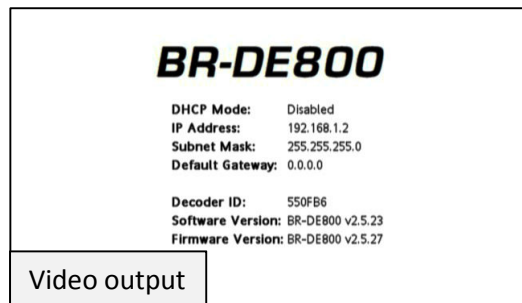


Launch BR-DE800 Reset Utility_2.5.3.exe (Windows)



Follow on-screen instructions:

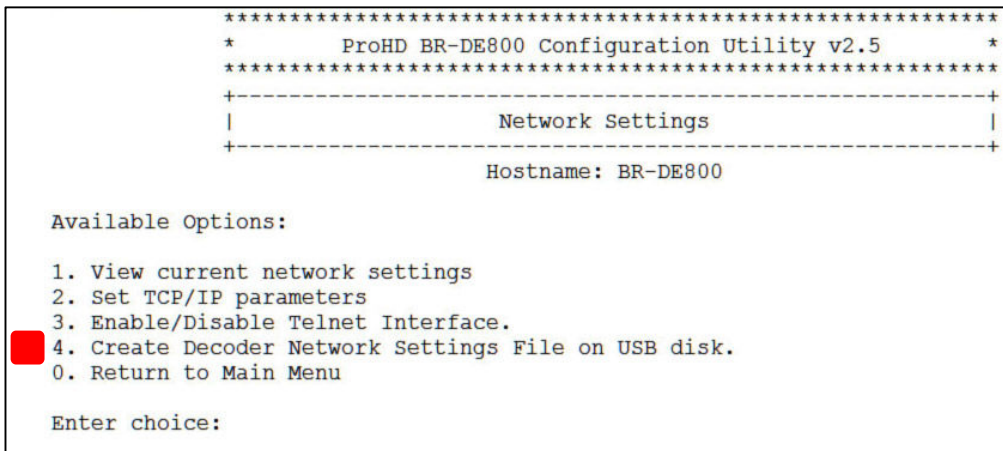
- Set PC IP address to 192.168.1.10 / 255.255.255.0
- Connect PC directly to decoder with LAN cable
- "Allow" firewall to proceed
- Click "Reset"
- Confirm system message to reset the decoder.
- Connect video monitor to SDI, HDMI or Video outputs



It will take 2-3 min to reset and reboot. IP address will be shown on SDI / HDMI / Video outputs. Login to decoder via Telnet / SSH @ 192.168.1.2 admin / jvc1234

Save / Restore settings from USB drive

Login to the BR-DE800 via Telnet / SSH, choose option 2 for network settings. Option 4 will save current network setup to XML file on USB drive.



To restore / reset network settings, connect USB drive and power ON the decoder. All network parameters will be set according to XML file.

[Sample XML file](#) is posted on pro.jvc.com website. (192.168.1.2 / 255.255.255.0 settings)