

**JVC**<sup>®</sup>  
**PROFESSIONAL**

42-INCH PLASMA DISPLAY MONITOR  
**GM-P420UG**

High-Resolution, Flat Plasma Monitor  
Delivering Bright, High-Contrast Picture with  
Wide Viewing Angle



- Superb Video Picture Quality
- 1500:1 Contrast Ratio
- Super Bright Picture 370 cd/m<sup>2</sup> (Set)
- 16.77 Million Colors/256 Levels
- Wide Viewing Angle (160 Degrees)
- Wall/Ceiling Mountable
- RS-232C Interface & MAKE Remote
- S-VGA/XGA Compatible
- Various Set-Up Capabilities
- Cooling Fanless

# Brighter, Sharper Pictures and Enhanced Flexibility

## ■ Contrast Ratio — 1500:1

The GM-P420UG comes with sophisticated circuitry that enhances its contrast ratio to 1500:1, making it the leader in its class.

## ■ Actual Brightness — 370 cd/m<sup>2</sup> (Set)

Brightness has also received a strong boost compared to conventional levels. Delivering bright pictures of 370 cd/m<sup>2</sup>, the GM-P420UG outperforms conventional models.

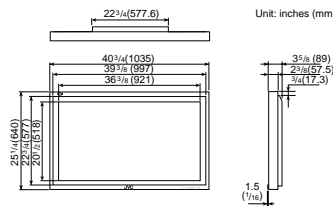
## ■ Fanless

Due to reduced power consumption, a cooling fan is not required, which eliminates noise.

## ■ EMC Class Variation

GM-P421U offers an EMC Class B compatible model.

## Dimensions



## Speaker System (Option)



### TS-C4200SPG Slim Wall-Mounted Speaker System

#### Specifications

Rated input	8 W
Nominal impedance	6 ohms
Dimensions (W x H x D)	3-15/16" x 23-7/8" x 3-9/16"
	100 mm x 610 mm x 89 mm
Weight	4.7 lbs./2.1 kg (each)

## Specifications

### ■ DISPLAY PANEL

Screen size (W x H)	36-3/8" x 20-1/2"/921 mm x 518.4 mm (wide 42-inch diagonal)
Aspect ratio	16:9 wide (width-to-height ratio of screen) 4:3/16:9 selectable
Viewing angle	160°
Display colours	16,777,216 (RGB each of 256 levels)
Brightness	370 cd/m <sup>2</sup> (Set)
Resolution (H x V)	640 x 480 (4:3) 853 x 480 (16:9) S-VGA: 800 x 600 (Displayed at 640 x 480) XGA: 1024 x 768 (Displayed at 640 x 480)
No. of pixels	Horizontal 853 x Vertical 480 pixels
Display modes	
Regular (4:3)	4:3 video image displayed in centre of screen
Full/Panoramic (16:9)	Displays wide horizontal expansion of 4:3 video image for full-screen display
Zoom (16:9)	Overall expansion of 4:3 video image for full- screen display (top and bottom of image are cut)
Input connectors	
Video A Composite	BNC connectors x 2, 1 V(p-p), 75 ohms negative sync., auto-termination, bridged output possible
Video B Composite YC	RCA pin x 1, 1 V(p-p), 75 ohms, negative sync., mini-DIN 4 pin x 1 Y: 1.0 V(p-p), 75 ohms, negative sync. C: 0.286 V(p-p), 75 ohms (NTSC Burst) 0.3 V(p-p), 75 ohms (PAL Burst)
Component	Y: 1.0 V(p-p), 75 ohms, negative sync., BNC x 1 PB/B-Y: 0.7 V(p-p), 75 ohms, BNC x 1 PR/R-Y: 0.7 V(p-p), 75 ohms, BNC x 1

### Compatible systems

Video A, Video B input	NTSC/PAL M/PAL N
Component input	480i, 576i, 480p, 720p, 1080i (1035i)
RGB A	D-sub 15-pin (3-row) x 1 Video signal: 0.7 V(p-p) Sync signal: 1.0 V(p-p) - 5.0 V(p-p), high impedance
RGB B	BNC x 5 R/B: 0.7 V(p-p), 75 ohms G: 0.7 V(p-p), 75 ohms, Sync. On G: 1.0 V(p-p) HD/CS: 0.3 V - 5.0 V(p-p), high impedance VD: 1.0 V - 5.0 V(p-p), high impedance
Audio input	Video A: RCA pin x 2 (L/R) 500 mVrms Video B: RCA pin x 2 (L/R) 500 mVrms Component: RCA pin x 2 (L/R) 500 mVrms PC: Stereo mini jack terminal x 1 (L/R) 500 mVrms
Weight	71.1 lbs. (32.3 kg)

### ■ GENERAL

Power requirement	120 V AC, 50/60 Hz
Power consumption	290W
Audio power output	Speaker out: 6 ohms to 16 ohms 3 W + 3 W (TYP at impedance 6 ohms)
Audio out terminals	Pin jack terminal x 2 (L/R) output impedance 600 ohms
Operating environment conditions	
Temperature range	32°F to 104°F (0°C to +40°C)
Humidity range	20% to 80%, non condensation

## Optional Accessories



### TS-C420P1W

**Stand Unit (Vertical Position)**  
Dimensions (W x H x D):  
19-11/16" x 23-15/16" x 27-9/16"  
(500 mm x 607.2 mm x 700 mm)



**Stand Unit (Horizontal Position)**  
Dimensions (W x H x D):  
27-9/16" x 15-3/16" x 17-13/16"  
(700 mm x 384.6 mm x 452 mm)



**TS-C420P2W (Portrait Setting)  
Wall Mounting Unit**  
Mounting Angle: 0°, 5°, 10°, 15°  
Dimensions (W x H x D): 19-1/2" x  
20-7/8" x 1-7/8" (494 mm x 529 mm x  
47 mm)\*

\*At the mounting angle 0°.

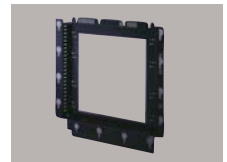


**TS-C420P3W  
Ceiling Suspension Unit**  
Mounting Angle: 0°, 10°, 20°  
Dimensions (W x H x D): 22-1/2" x  
17-3/4" x 6-1/2" (570 mm x 450 mm x  
165 mm)\*



**TS-C420P5W  
Stand Unit**  
Dimensions (W x H x D): 22-5/8" x  
8-15/16" x 13" (574 mm x 226 mm x  
330 mm)

**TS-C01FANG  
Cooling Fan Unit**  
Dimensions (W x H x D):  
6-7/8" x 1-5/16" x 6-5/16" (174 mm x  
33 mm x 160 mm)  
(not including cable)



**TS-C420P6W  
Wall Mounting Unit**  
Mounting Angle: 0°  
Dimensions (W x H x D): 22-1/2" x 22-11/16" x  
1-7/8" (570 mm x 576 mm x 47 mm)\*

**TS-C420P8W (Landscape  
Setting)  
Wall Mounting Unit**  
Mounting Angle: 0°, 5°, 10°, 15°  
Dimensions (W x H x D): 14-1/16" x  
20-1/2" x 2" (610 mm x 520 mm x 50 mm)\*

**Caution:** PDP is an ultra modern electronic device fabricated using leading-edge technology. Therefore, its effective picture elements are 99.99 percent or more, meaning 0.01 percent or less defective elements or "always ON" portion could exist. ■ Screen burn-in: Like a CRT, PDP uses phosphor; therefore, burn-in could result from long-term use such as displaying the same still picture.

*Design and specifications subject to change without notice.*

# JVC®

**DISTRIBUTED BY**

JVC PROFESSIONAL PRODUCTS COMPANY  
DIVISION OF JVC AMERICAS CORP.  
1700 Valley Road, Wayne, N.J. 07470  
TEL: (973) 317-5000, (800) 582-5825  
FAX: (973) 317-5030  
Internet Web Site <http://www.jvc.com/pro>  
E-mail: [proinfo@jvc.com](mailto:proinfo@jvc.com)

JVC CANADA INC.  
21 Finchdene Square, Scarborough, Ontario M1X 1A7  
TEL: (416) 293-1311 FAX: (416) 293-8208  
Internet Web Site <http://www.jvcpro.com/>