

Get free trial version today!  
<http://www.jvc-victor.co.jp/english/pro/vnetworks/index-e.html>



## VN-S400U Multi-Viewer Software

Versatile Multi-Viewer Application with Powered-Up Security Functions and Systems Flexibility Lets You Make the Most of Your Network Camera Systems.

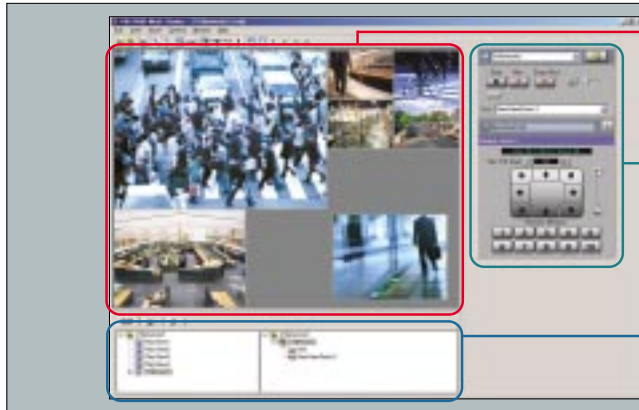
### Major Features



- Up to 256-Unit Multi-Camera Display with Sequential Switching
- User-Friendly Interface with Easy Point-and-Click Operation
- Versatile Recording & Playback Functions including Timer Recording
- External Device Control including Analog CCTV Camera Control
- Full Support for JVC V.NETWORKS Systems

# More Flexible, More Reliable, and Easier to Use

## ● VN-S400U



### ● View window area

Displays camera images in up to 16 windows. JPEG or MPEG images are displayed.

### ● Controller area

Activates recording and snapshot functions. Also lets you adjust settings and control operations on connected devices.

### ● Management Explorer

Convenient icon display with point-and-click operation. Easy access to operational and system data such as connected cameras, recorded files, or alarm lists.

## ● Features

### Up to 256-Unit Multi-Camera Display with Sequential Switching

Lets you display multiple camera images in **up to 16 windows** either in separate windows or in a single screen. You can assign up to 16 cameras to each window, allowing you to **register a total of up to 256 cameras**. **Sequential Switching** automatically switches the source camera at designated intervals, making it easy to monitor multiple camera images.

### User-Friendly Interface with Point-and-Click Operation

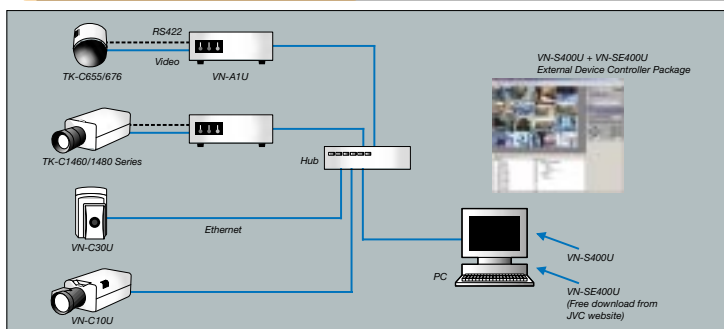
Our exclusive **Management Explorer** is now even easier to use. A new **user-friendly interface** with camera view window and controller windows integrated in a single screen enables you to monitor camera images, control operations, check camera status and other data — all with simple point-and-click operation.

### Versatile Recording/Playback Functions including Timer Recording

With a wider variety of recording and playback functions to choose from, the VN-S400U gives you more flexibility and greater reliability. For recurrent recording at specified times, you can use **Timer Recording** with both weekly and daily setting options available. For security purposes, you can use **Timelapse Recording** for reliable long-duration recording or **Alarm Recording** to capture alarm events in detail. Also provided is an **Email Alert Function** that automatically sends email with attached JPEG image to a preset address whenever an alarm is detected.

Playback is easy and convenient, too. You can **easily access desired recorded scenes** by specifying a camera number or alarm index, or you can designate a specific section and extract it from the recordings.

## ● System Examples



### External Device Control including Analog CCTV Camera Control

The VN-S400's expandable, versatile design makes it much more than just a controller for designated JVC V.NETWORKS cameras. Now you can control different types of cameras and other devices through a single control window. With the **VN-A1U Network Encoder** connected, you can connect JVC analog **CCTV cameras** such as the TK-C1480 or TK-C655/676. Plug-in software is available for **free download** to let you connect and control those external devices.

### ● JVC CCTV Cameras

#### • TK-C1480 Series



#### • TK-C655/676



### Full Support for JVC V.NETWORKS Systems

Fully compatible with the latest JVC V.NETWORKS models such as VN-C10U, VN-C30U or VN-A1U, the VN-S400U supports the powerful features of these models, including **Pan/Tilt/Position Memory** for VN-C30, and **Multi-Casting** capability and **Motion Detection** function for VN-C10U/VN-A1U.

## ● Specifications

<b>Compatible device</b>	<b>VN-C10U</b> (ver. 1.2), <b>VN-A1U</b> (ver. 2.0), <b>VN-C30U</b> (ver. 1.7 or later, JPEG mode only), <b>VN-C1U*</b> (firmware version 4.0 or later), <b>VN-C2U*</b> (ver. 4.0 or later), <b>VN-C3U*</b> (ver. 2.1 or later)	
<b>Number of camera windows that can be displayed simultaneously</b>	16 (max.)	
<b>Number of cameras that can be registered</b>	256 (max.)	
<b>Number of units that can be connected for sequential switching</b>	16 (max.)	
<b>System requirements</b>	<b>OS</b>	Windows® 2000 Professional (SP3) / XP Professional (SP1) / XP Home Edition (SP1)
	<b>CPU</b>	Pentium III 1 GHz or higher
	<b>Memory</b>	256 MB or more
	<b>Hard disk space</b>	20 MB or more (additional 200 MB required for recording)
	<b>Graphic board</b>	DirectX support
	<b>Display</b>	1024 x 768 pixels or more (1280 x 1024 recommended), True Color (24 bit) or more
	<b>LAN card</b>	100Base-T/TX
	<b>Browser</b>	Internet Explorer 6.0
<b>Other</b>	DirectX 8.1 retail runtime package required	

\*VN-C1U/C2U/C3U has already been discontinued.

NOTE: To ensure continued, uninterrupted use of your VN-S400U, please access our online activation site and complete user registration within 30 days of installation.

# JVC PROFESSIONAL

DISTRIBUTED BY V.NETWORKS Website: <http://www.jvc-victor.co.jp/english/pro/vnetworks/index-e.html>  
E.&O.E. Design, dimensions and specifications are subject to change without notice.