

JVC

PROFESSIONAL

V.NETWORKS

Visual Network System



VN-C30U • Visual Network System

New State-Of-The-Art Network Camera System Offering High-Quality CCD Sensor And 15x Optical Zoom Mechanism For High-Resolution Imaging And Detailed Monitoring

The latest addition to JVC's V.NETWORKS series, the VN-C30U brings a new standard of quality and performance to network-based imaging. Featuring a powerful CCD, the VN-C30U delivers dramatically improved picture quality that's maintained even in close-up telephoto shots by a built-in 15x optical zoom. Image delivery has been improved too with the addition of MPEG1 compression for smoother, real-time motion. With a built-in 10Base-T/100Base-TX interface, this versatile camera can be plugged into just about any network for high-speed data transfer and operation.

<http://www.jvc-victor.co.jp/english/pro/vnetworks/index-e.html>

Major Features

1/4" 380,000-Pixel CCD To Capture Clearer Images

If your application requires precise, high-quality imaging, the VN-C30U is the right choice. Incorporating a high-resolution 1/4" CCD with 380,000 pixels, the VN-C30U captures superior, high-quality images with more light and more detail. Clear, bright images are assured, even at night, making it ideal for monitoring or security/surveillance applications where accurate imaging is critical.

Powerful 15x Optical Zoom

In spite of its compact size, the VN-C30U is no lightweight when it comes to imaging capabilities. It incorporates a powerful optical 15x zoom mechanism that you can easily control from your PC.

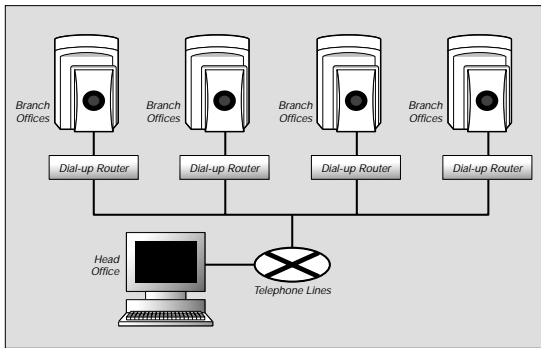
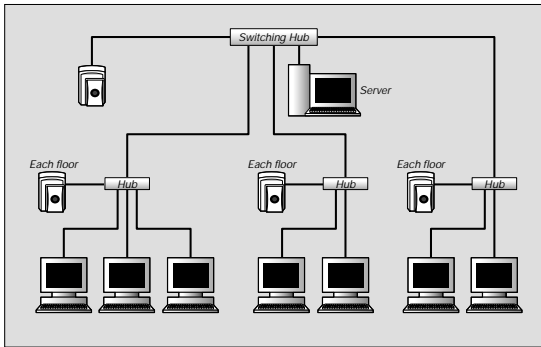
MPEG1 Smooth Motion Pictures

To improve delivery of motion images, the VN-C30U adds MPEG1 image compression to the conventional JPEG standard. With MPEG1, motion images can be efficiently compressed for network transfer, while maintaining a frame rate of 30fps for minimal loss of movement. Managing data flow over your network is easy too, because you can also set the constant bit rate you prefer.

10Base-T/100Base-TX Interface For Direct Ethernet Connection

With a built-in 10Base-T/100Base-TX interface, the VN-C30U can be incorporated with equal ease in a conventional 10Base-T LAN or the latest high-speed 100Base-TX network. Simply connect the camera to an existing Ethernet network and assign it an IP address. That is all you need to do to get it up and running on a network.

System Examples



Other Features

■ Built-in Multi-Angle Pan/Tilt Capability

The high-speed pan/tilt function gives you control over horizontal, vertical and diagonal camera movement. Up to 10 presets are available, allowing quick access to the desired monitor location.



■ Alarm In/Out Function

The VN-C30U can be set to work in conjunction with an infrared sensor or door alarm, automatically moving to a preset position when an alarm signal is received.* Automatic alarm recording is also possible.

**Pre-setting of desired camera angles or zoom ratios is necessary.*

■ Viewer/Controller Software Included

The included viewer/controller software enables remote control of a variety of camera operations and settings such as network and picture quality setting, as well as pan/tilt and zoom control. You can also operate recording and playback of the camera images.



Viewer/Controller Software

Specifications

| | | |
|-------------------------------|----------------------|---|
| Camera | Image Sensor | 1/4" CCD, 380,000 pixels |
| Lens | Zoom | Optical 15x |
| | Focal Length (f) | 4.1mm — 61.5mm |
| | Aperture Ratio (F) | F1.4 |
| | Focus | Auto/Manual |
| | Min. Object Distance | 0.8m |
| Interface | | 10Base-T/100Base-TX |
| Alarm I/O | | Input x2, Output x1 |
| Protocol | | UDP/IP, TCP/IP |
| Picture | Resolution (Pixels) | 160 x 120, 320 x 240, 640 x 480 |
| | Compression | MPEG1, JPEG |
| Frame Rate (fps)* | 160 x 120 | MPEG1: 30, JPEG: 15 |
| | 320 x 240 | MPEG1: 30, JPEG: 10 |
| | 640 x 480 | MPEG1: —, JPEG: 3 |
| Position Memory | | 10 positions |
| Pan/Tilt Angle | Pan | +160° — -160° |
| | Tilt | 0° — -90° |
| Pan/Tilt Speed | | 100°/s |
| View Through | | JVC Control Software |
| Power Requirement | | DC12V 2.0A (Max.) |
| Dimensions (H x W x D) | | 166mm x 105mm x 105mm (6-1/2" x 4-1/8" x 4-1/8") |
| Weight | | 800g (28.2 oz.) |

**Frame rate varies depending on the operating environment.*

V.NETWORKS Lineup:

Cameras:

- | | |
|---|--|
| VN-C3U • Optical 10x Zoom • Pan/Tilt • Alarm In/Out | VN-C3WU • Optical 10x Zoom • Pan/Tilt • Web Server • Alarm In/Out |
| VN-C2U • Pan/Tilt | VN-C2WU • Pan/Tilt • Web Server |
| VN-C1U • Fixed Lens | |

Accessories:

- VN-BK20**
Bracket for VN-C2U/2WU
- VN-BK30**
Ceiling bracket for VN-C30U/C3U/C3WU
- VN-BK31**
Wall bracket for VN-C30U/C3U/C3WU