

# JVC PROFESSIONAL

Upgraded Version 3

# V.NETWORKS

Visual Network System



## VN-C30U • Visual Network System

### New State-Of-The-Art Network Camera System Features Built-In Web Server And High-Resolution Imaging Capability For Versatile Remote Surveillance

The latest addition to JVC's V.NETWORKS series, the VN-C30U brings a new standard of quality and versatility to network-based imaging. In addition to the dramatically improved picture quality made possible by its powerful CCD, the VN-C30U features a built-in Web server that allows you to connect it directly to the Internet without a computer, as well as an FTP server for storage of user-designed web pages. Thanks to the new NAT/IP Masquerade feature, multiple VN-C30Us can be connected to a NAT/IP Masquerade-compatible router and share a single IP address, allowing easy control via the Internet. All of these features make it very easy to set up remote surveillance systems with web-based access and control. MPEG1 compression ensures smooth, real-time image delivery, while a built-in 10Base-T/100Base-TX interface gives you the high-speed network connection you need for reliable data transfer and operation.

<http://www.jvc-victor.co.jp/english/pro/vnetworks/index-e.html>

## Major Features

### Built-In Web Server

The VN-C30U's compact all-in-one design includes a camera unit with pan/tilt and zoom capability, JPEG image compression, network interface and Web server. Images can be served directly to the Internet without a computer.

### 1/4" 380,000-Pixel CCD

Incorporating a high-resolution 1/4" CCD with 380,000 pixels, the VN-C30U captures superior, high-quality images with more light and more detail. Clear, bright images are assured, even at night.

Upgraded!

### Support NAT/IP Masquerade

Now you can develop and expand your system without worrying about additional IP addresses. When connected to a router compatible with the NAT/IP Masquerade function, multiple VN-C30Us can share single global IP address, allowing easy control via the Internet.

Upgraded!

### Web Page Servicing

FTP server capability enables users to upload a specially designed web page inside the camera with a JAVA Applet Controller that provides features such

as Pan/Tilt/Zoom buttons and camera preset buttons.

### MPEG1 Smooth Motion Pictures

To improve delivery of motion images, the VN-C30U adds MPEG1 image compression to the conventional JPEG standard. With MPEG1, motion images can be efficiently compressed for network transfer, while maintaining a frame rate of 30fps for minimal loss of movement.

### Powerful 15x Optical Zoom

In spite of its compact size, the VN-C30U incorporates a powerful

optical 15x zoom mechanism that can easily be controlled from your PC.

### 10Base-T/100Base-TX Interface For Direct Ethernet Connection

Simply connect the camera to an existing 10Base-T/100Base-TX Ethernet network and assign it an IP address. That is all you need to do to get it up and running on a network.

## Other Features

### ▣ Versatile Monitoring and Camera Control Capability

Since the VN-C30U comes with a built-in Web server and viewer/controller software, you can choose the monitoring and control system that works best for you. If you need a platform-independent system that can be accessed from any computer anywhere, you can use a **standard Web browser\*** to view images and operate cameras over the Internet or on a local network. Alternatively, you can build a more exclusive system for use on your local network with the included **viewer/controller software**.

Either way, you'll be able to remotely operate a **variety of camera functions and settings** such as network and picture quality setting, as well as pan/tilt and zoom control. With the viewer/controller software, you can also control **recording and playback**.

*\*For compatible browsers, please refer to the specifications below.*



Web browser



Viewer/Controller Software

### ▣ Built-in Multi-Angle Pan/Tilt Capability

The high-speed pan/tilt function gives you control over horizontal, vertical and diagonal camera movement. Up to 10 presets are available, allowing quick access to the desired monitor location.

### ▣ Alarm In/Out Function

The VN-C30U can be set to work in conjunction with an infrared sensor or door alarm, automatically moving to a preset position when an alarm signal is received.\* Automatic alarm recording is also possible.

*\*Pre-setting of desired camera angles or zoom ratios is necessary.*

## V.NETWORKS Lineup:

### Other Cameras:

- VN-C2U • Pan/Tilt
- VN-C2WU • Pan/Tilt • Web Server
- VN-C1U • Fixed Lens

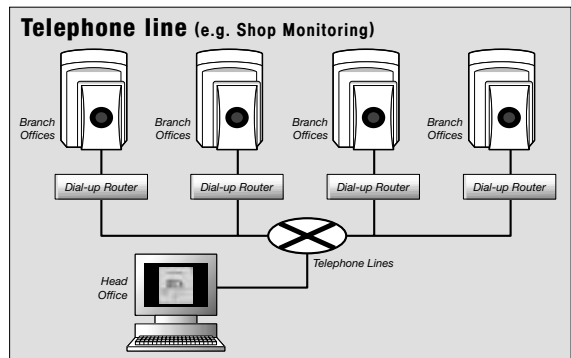
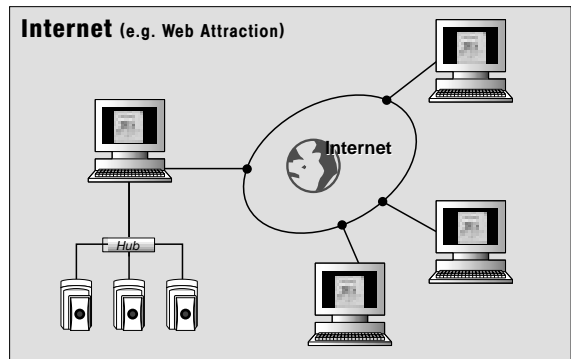
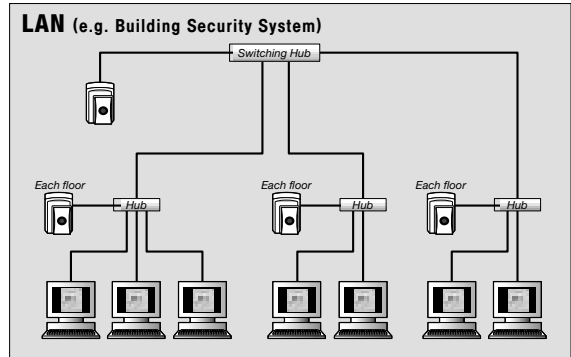
### Accessories:

- VN-BK20 Bracket for VN-C2U/2WU
- VN-BK30 Ceiling bracket for VN-C30U
- VN-BK31 Wall bracket for VN-C30U

## Specifications

<b>Camera</b>	Image Sensor	1/4" CCD, 380,000 pixels	
	<b>Lens</b>	Zoom	Optical 15x
		Focal Length (f)	4.1mm — 61.5mm
		Aperture Ratio (F)	F1.4
		Focus	Auto/Manual
		Min. Object Distance	0.8m
Min. Illumination	2.5 Lux		
<b>Interface</b>		10Base-T/100Base-TX	
<b>Alarm I/O</b>		Input x2, Output x1	
<b>Protocol</b>		UDP/IP, TCP/IP, HTTP, FTP	
<b>Picture</b>	Resolution (Pixels)	160 x 120, 320 x 240, 640 x 480	
	Compression	MPEG1, JPEG	
<b>Frame Rate (fps)*</b>	160 x 120	MPEG1: 30, JPEG: 15	
	320 x 240	MPEG1: 30, JPEG: 10	
	640 x 480	MPEG1: —, JPEG: 3	

## System Examples



<b>Position Memory</b>		10 positions
<b>Pan/Tilt Angle</b>	Pan	+160° — -160°
	Tilt	0° — -90°
<b>Pan/Tilt Speed</b>		100°/s
<b>View Through</b>		JVC Control Software/ Web Browser**
<b>Power Requirement</b>		DC12V 2.0A (Max.)
<b>Dimensions (H x W x D)</b>		166mm x 105mm x 105mm (6-1/2" x 4-1/8" x 4-1/8")
<b>Weight</b>		800g (28.2 oz.)

*\*Frame rate varies depending on the operating environment.*

*\*\*Web browser compatible with both Java-script and frame display. Netscape 4.0 or later, or Internet Explorer 4.0 or later is required. Depending on which version of Java VM (virtual machine) is installed, it may not be possible to view moving images even with Internet Explorer version 4.0 or later*

# JVC PROFESSIONAL

DISTRIBUTED BY V.NETWORKS Website: <http://www.jvc-victor.co.jp/english/pro/vnetworks/index-e.html>  
E.&O.E. Design, dimensions and specifications are subject to change without notice.