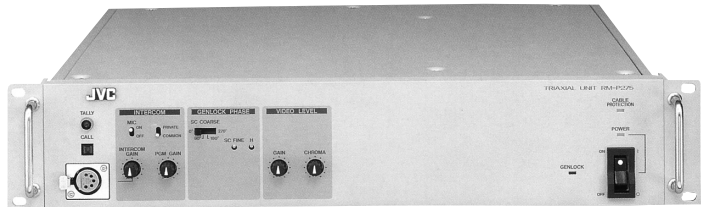


# Component Triaxial System

## RM-P275U

(Please check for world-wide availability)

- Component outputs (Y, R-Y, B-Y), composite outputs, and Y/C outputs
- Wide bandwidth 12 MHz for both conventional 4:3 and wide-screen 16:9 aspect ratio
- Camera and base station can be separated by a distance of up to 1.5 km (1 mile) via cable
- Automatic camera phase control for genlock circuit with composite video (VHS) or black burst (BB) signals
- Compatible with high-performance digital cameras (KY-D29/KY-D29W)
- Serial interface for camera operations
- Base station operable by remote control panel (RM-LP35)
- 4-line intercom system
- Program audio output monitoring
- 19" rack mountable (2U)



35

### Output signals

Component	Y: 1 Vp-p 75 ohms Pb: 0.7 Vp-p 75 ohms Pr: 0.7 Vp-p 75 ohms
Composite video signal	1 Vp-p, 75 ohms x 2
Y/C signal	Y: 1 Vp-p (including SYNC) 75 ohms C: 0.3 Vp-p (burst level), 75 ohms x 2
Intercom	4-wire system: 0 dB, 600 ohms balanced
Audio signal	-20 dBm, 600 ohms

### Input signals

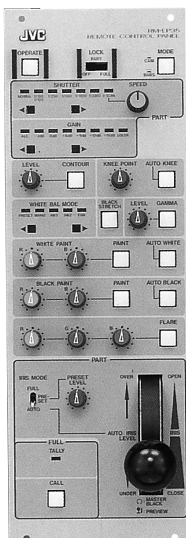
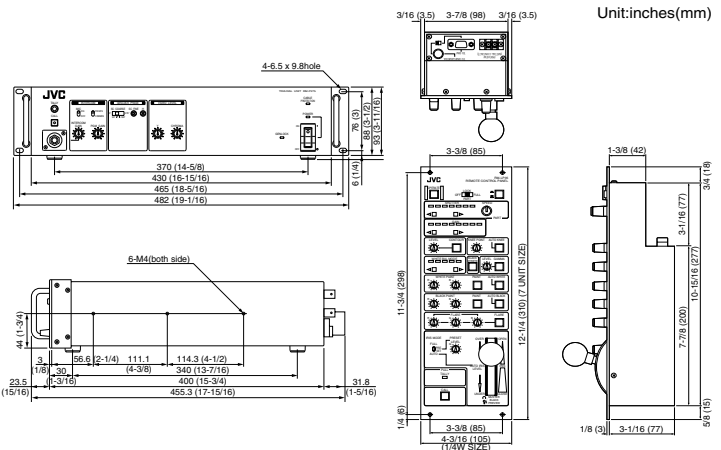
External sync signal	Composite video signal 1 Vp-p, 75 ohms (bridge connectable) or black burst 0.45 Vp-p
RET signal	Composite video signal or VS 1 Vp-p, 75 ohms x 2 (bridge connectable)
MIC input	-60 dBm, 600 ohms
Intercom	4-wire system: 0 dB, 600 ohms balanced
Program audio	-4 dB, 600 ohms, unbalanced
Tally	Contact supply or power supply (5 - 24 V DC or 6 V AC)

### Others

Input voltage	120 V AC, 50/60 Hz
Power consumption	75 W (including camera with VF-P550B)
Weight	Base station: 11.5 kg (25.4 lbs.) Camera adapter: 2.7 kg (6 lbs.) (including handle and top cover)
Ambient temperature	0°C to 40°C (32°F to 104°F)

### Accessories

Power cord x 1, Handle x 1, Extension board x 1, Top cover x 1, Line filter x 1



RM-LP35

