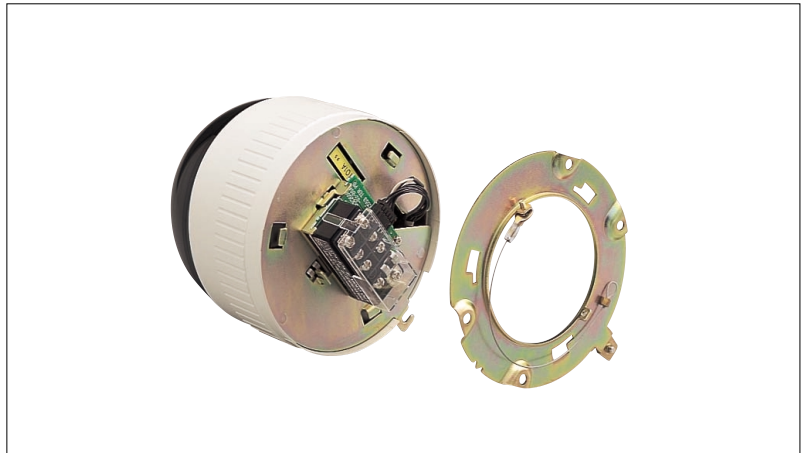


## Fixed Color Dome Camera



### FEATURES

- Variable Focal-Length Lens (f=2.6 to 6 mm)
- 1/4-inch 380,000 Pixel CCD
- High Sensitivity — 4 Lx (with cover), 1.5 Lx (without cover)
- Digital 2X Zoom — Auto Pan, Tilt, Scroll and Preset Sequence (Auto Patrol) Mode
- 6 Preset Positions
- One-push Auto White Balance
- Programmable Backlight Compensation
- RS-422A and RS-485 Control Signals
- Compact, Space-saving Design

### ARCHITECTS' AND ENGINEERS' BID SPECIFICATION

The unitized camera/dome assembly shall be a self-contained unit that incorporates an integral color camera, pan and tilt motor, zoom lens and receiver/driver. The unitized surveillance device shall be a JVC Model TK-C553U or equivalent.

The camera shall have a diameter of 4-9/16". The camera shall feature an advanced 1/4" CCD with a built-in complimentary color filter and 753(H) x 582(V) pixels with microlens on each pixel. The camera shall be equipped to produce a high quality picture with a horizontal resolution of over 470 lines with a minimum illumination of 3 lx (f/1.2). The camera shall feature horizontal noiseless aperture correction, vertical 2H enhancer, highlight aperture and knee circuit for wide video dynamic range. The camera shall be equipped with an auto back light compensation mode as part of the light control function. The automatic backlight compensation shall feature mask setting and level adjust capability. The camera shall be equipped with a built-in digital motion detector with mask setting and level adjustment as well. The camera shall also be equipped with an electronic sensitivity up feature to enhance camera performance in extreme low light conditions. The camera shall feature auto tracing white balance capability with a 48 section mask and level adjustment capability for accurate color reproduction. The unitized surveillance device shall feature an electronic shutter adjustable from 1/100 to 1/10,000 seconds. The camera shall feature an alphanumeric title of 16 characters.

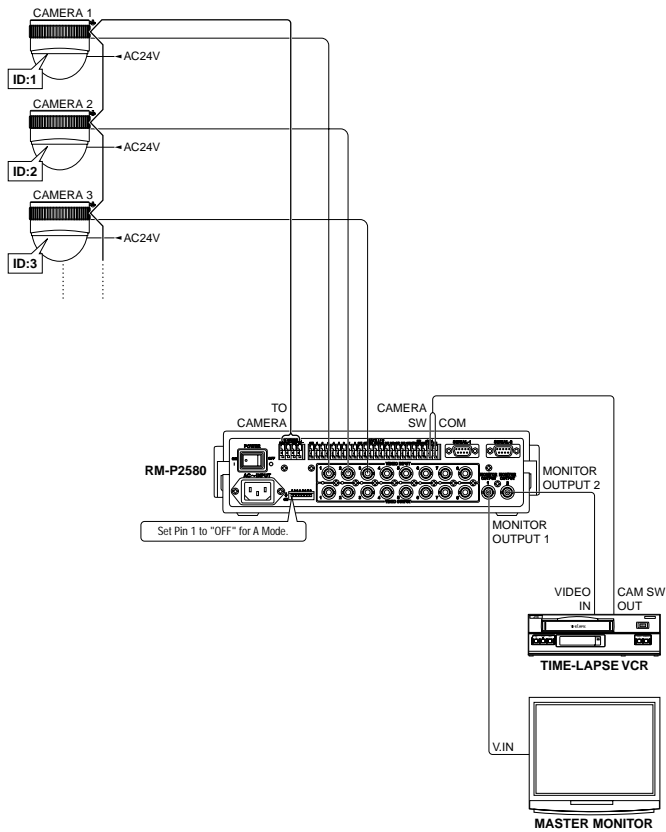
The unit shall incorporate a vari-focal lens of f=2.6-6mm with 2X digital zoom. The zoom lens shall have an auto iris and auto focus feature that shall allow manual override if the need arises. The minimum aperture throughout this range shall vary from a minimum of f/1.7 at the wide angle setting to f/2.5 at the telephoto lens position.

The camera synchronization shall be internal, line-lock and VD (vertical drive) lock over a single coaxial cable when used with optional Matrix System 500. The camera shall be enclosed in an aluminum diecast housing and UL listed.

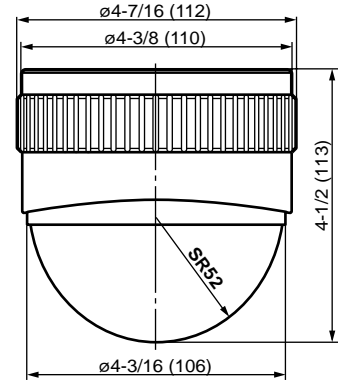
The pan and tilt motor shall be a high-speed unit allowing 90° rotation with a tilt angle of 30°. The camera shall automatically sequence through the preset positions in logical programming order (sequence mode) or actual position (sort mode). The camera shall include 10 programmable scene files, each of which may assign a combination of special camera settings such as built-in digital motion detector and electronic sensitivity up. Any scene file shall be able to be assigned to a camera preset position for optimum camera performance in difficult lighting conditions. The pan and tilt section shall feature automatic panning mode. The automatic panning limits and speed adjustment shall be selectable from an on-screen menu and not with mechanical or physical limit stops. The dome assembly shall come pre-wired from the factory.

Video signal, synchronization and control data shall be transmitted up to 3000' over (Belden 9259 or equivalent) a single coaxial cable for easy installation. Equivalent coaxial cable used shall feature a DC resistance rating of less than 15 ohm/1000', solid copper center conductor and 95% braided, pure copper shield. The power source shall be 24VAC, 60Hz.

## System



## Dimensions



## Specifications

### ■CAMERA

Signal system	NTSC
Image device	1/4" IT CCD
Effective picture element	380,000 pixels, 768 (H) x 494 (V)
Sync system	Line lock/Internal
Video S/N	50 dB (typical)
Horizontal resolution	470 TV lines (typical)
Minimum illumination	4 lx (Full wide angle, AGC 20 dB, Y: 25%) 1.5 lx (Full wide angle, AGC 20 dB, Y: 25%, no cover)
Camera ID	24 characters
White balance	ATW/Manual/AWC
BLC	Available by adjustment of light metering area position

### ■LENS

Focal length	2.6 to 6 mm (variable)
Max. aperture ratio	F1.2 to F1.8
Angle of vision:	
	f = 2.6 mm, 82° (H) x 59° (V)
	f = 6 mm, 35° (H) x 26° (V)

### ■ANGLE ADJUSTMENT RANGE

Horizontal	90°
Vertical	130°
Tilt	30°

### ■GENERAL

Remote control input	RS-422A or RS-485 (non-isolated)
Power requirement	AC 24 V~, 50/60 Hz or DC 12 V
Power consumption	Approx. 3.6 W
Operating temperature range	14°F to 122°F/-10°C to +50°C (recommendation: 32°F to 104°F/0°C to +40°C)
Dimensions	Approx. 4-7/16" (112 mm) diameter x 4-1/2" (113 mm)
Weight	Approx. 1.3 lbs. (570 g) with ceiling mount