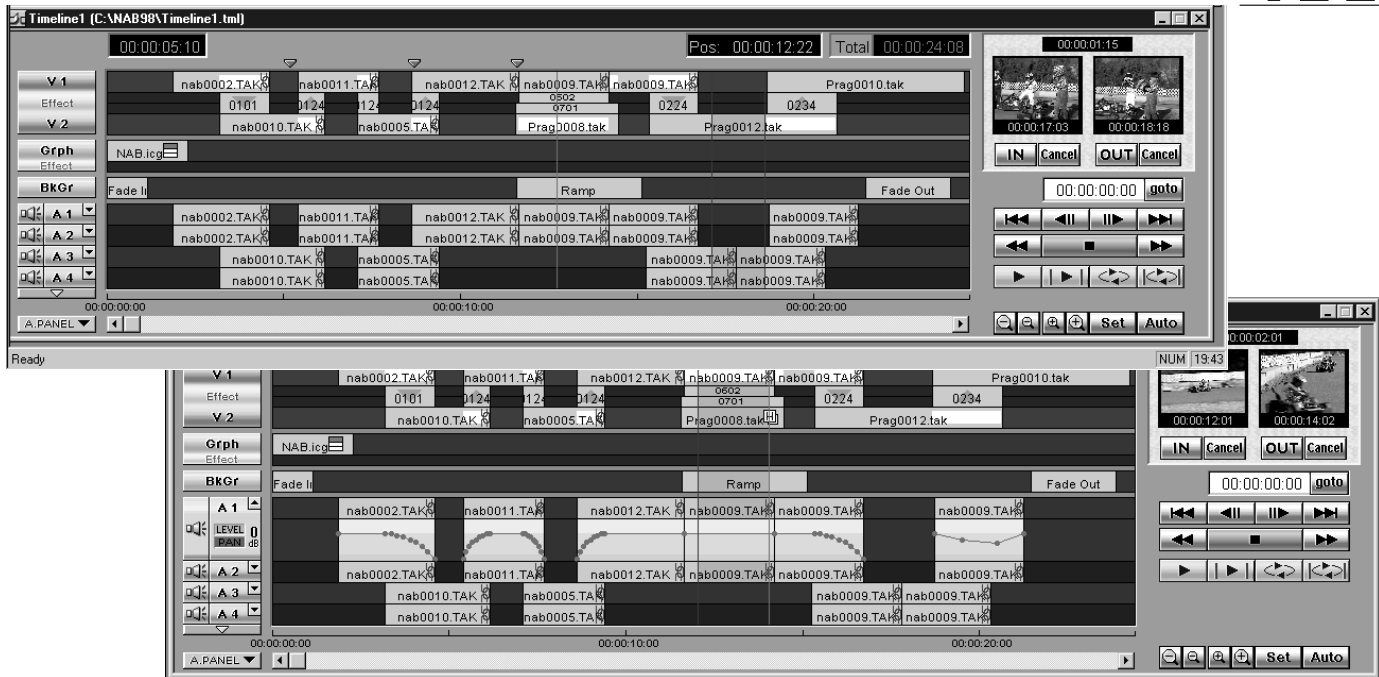


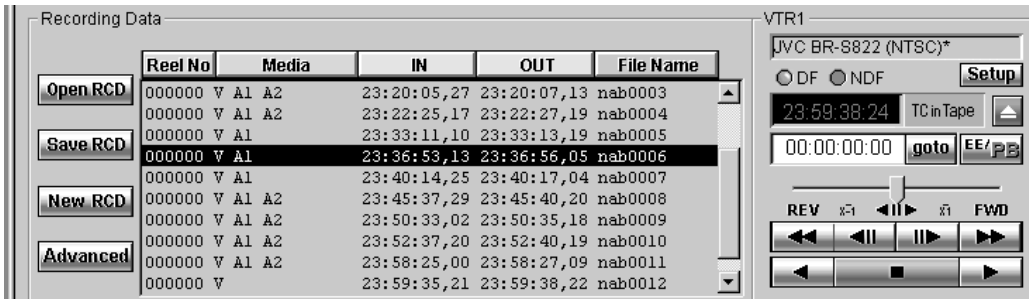
MW-S1000U



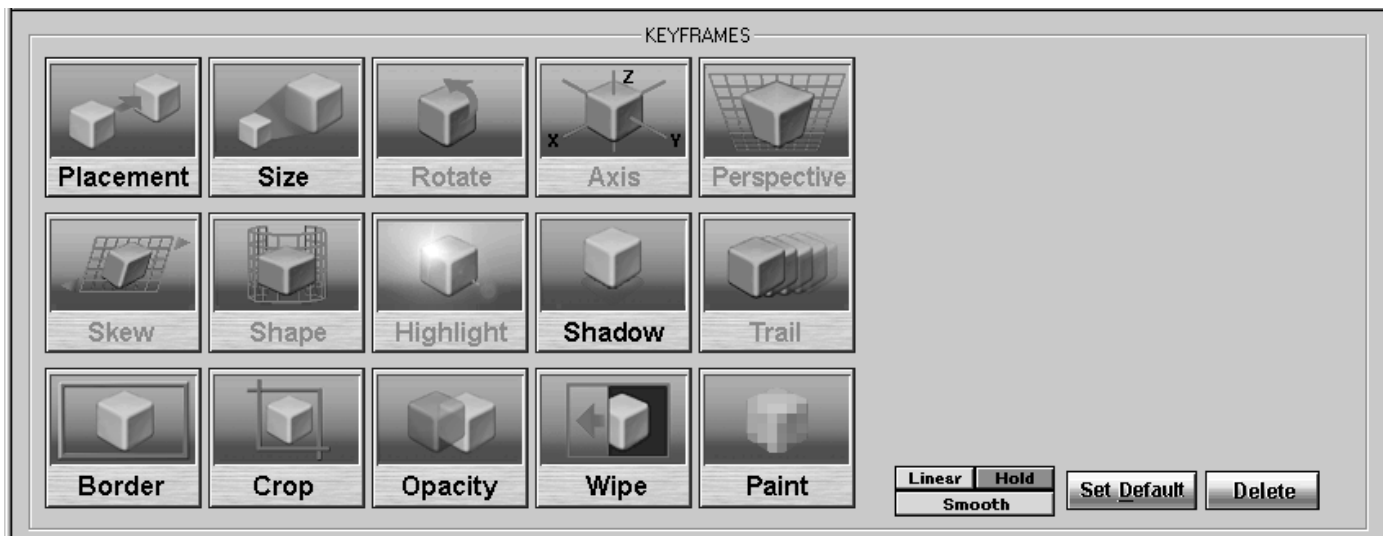
24



Dual timeline



VTR control



Example effect control

MW-S1000U

COMPONENT DIGITAL
4:2:2

The screenshot displays the JVC Media Workstation software interface, titled "Media Workstation - NAB99". The interface is divided into several functional areas:

- Gallery:** Located at the top, it shows multiple galleries (Gallery2, Gallery3, Gallery5) containing various video clips and stills. A detailed metadata window for "D:\NAB99\NAB0012.TAK" is visible, showing details like media type (V+A), duration (00:00:05.00), date (3/2/99 7:59:38 PM), and compression ratio (4:1).
- Effect:** A large window on the right side displays a grid of 50 different video effects, categorized into Wipe, Clock, Matrix, 2D Transition, 3D Transition, 2D Filter, Other Filter, and User. The 3D Transition tab is currently selected.
- Timeline:** The bottom section shows a multi-track timeline for editing. It includes tracks for video (V1, V2), graphics (Grph), background (BkGr), and audio (A1, A2, A3, A4). The audio tracks show waveforms and volume levels. A "3D DVE" (3D Digital Video Effect) control panel is also visible, featuring buttons for "IN", "OUT", "Cancel", and "Set 0dB", along with a "Recording Mode" checkbox.
- Audio Editing:** At the bottom, there is a detailed audio mixing console with eight individual channel faders (A1 through A8) and a Master fader, all with level meters ranging from -50 to 12 dB.

Audio editing