

## DT-N24F

### 23.8" Broadcast Studio LCD Monitor



#### HIGHLIGHTS

##### Supports 3G/HD/SD-SDI and 2K-SDI

DT-N24F supports up to 3G-SDI (SMPTE 425M) including Level-A and Level-B, which are capable of transferring 1080p uncompressed digital video data at a max rate of 60fps at 3Gbit/s. 2K-SDI (2048x1080p) is also supported to downsample to full HD display.

##### Full HD LCD panel with LED backlighting

The monitor features a 1920x1080 pixel full HD resolution LCD panel with LED backlighting, with 178° wide viewing angle (horizontal and vertical), 1000:1 contrast, and 16.7M color depth.

##### ITU-709 color space

The DT-N24F is compatible with ITU-709 standard color space for HDTV broadcasting.

##### Selectable gamma preset

The DT-N24F supports gamma preset selection from: 2.2, 2.4 and 2.6.

##### TSL UMD control and display

The DT-N24F monitor supports UMD controlling input via RS485 and RS232 port, compatible with TSL 3.1 and 4.0 UMD protocol.

##### USB firmware upgradable

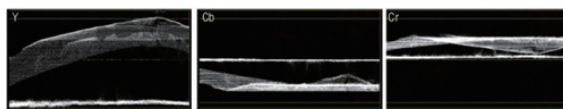
The Monitor offers a USB port on the rear side, for monitor firmware upgrade. Users can download firmware from official website to a USB stick, and the upgrade operation is directly on the monitor, without PC or other adaptors.

##### Other features

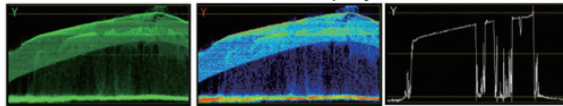
- SDI Timecode (LTC, VITC1&2) and AFD info display
- R/G/B/Mono, False color, Zebra stripes display
- Peaking focus assist display mode
- H/V delay, freeze frame display mode
- Safety area selection: 80%, 85%, 90%, 93%, 95%
- Scale marker: 4:3, 13:9, 14:9, 15:9, 1.85:1, 2.35:1
- Native scan, over scan and normal scan selection
- GPI control via RS485 port connection
- 3 User setting data storage
- TALLY light with adjustable brightness
- 4 User definable function keys
- Easy One-key Menu operation
- Built-in speakers (2.5Wx2, 8Ω)
- Anton Bauer plate for field application

##### Built-in waveform monitor

The DT-N24F supports waveform selection display (Y, Cb, Cr, R, G, B), and also supports single lines waveform display. The waveform pattern position can be selected from one of four corners and center in larger size. And waveform display color can be selected from white, green and false color, with the transluence also selectable.



Y, Cb, Cr, R, G, B selection display



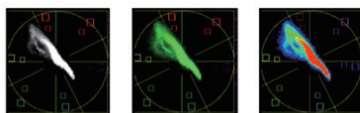
Color selection and single line mode



Display position selection: four corners and large center, with adjustable transluence

##### Built-in vector scope and histogram monitor

The DT-N24F supports vector scope and R/G/B/Y histogram display. The vector scope colors can be selected from white, green and false color, and the position of the patterns can be selected from one of four corners and the translucent is also selectable.



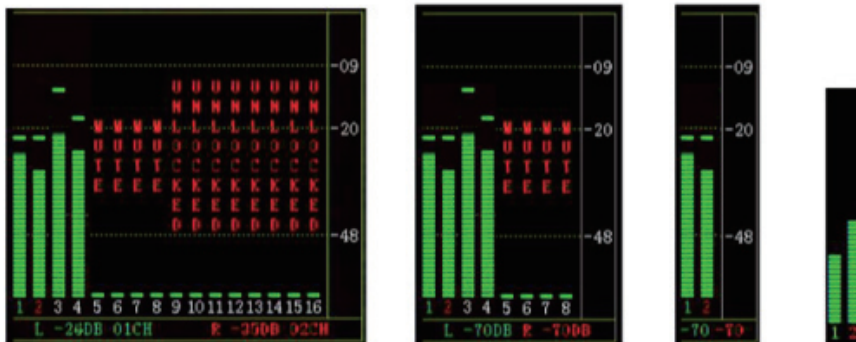
Vector color selection  
Translucent adjustment



Position selection R/G/B/Y histogram

##### 16-ch audio level meters with alert and output selection

The monitor can de-embed audio from SDI and HDMI, and display 16-ch audio level meters, with audio abnormal alerts info displayed on each audio bar. You can also select any 2 channels audio to output via 3.5mm socket or speakers. The audio meter pattern position can be selected from one of four corners, and you can select to display only 2 channels, 8 channels, and full 16 channels. Also scale markers, alert info, and translucent of the audio meter pattern are selectable.



16-ch / 8-ch / 2-ch display mode selection, audio alert on/off, markers on/off, Translucent adjustment, 4 corners display position selection



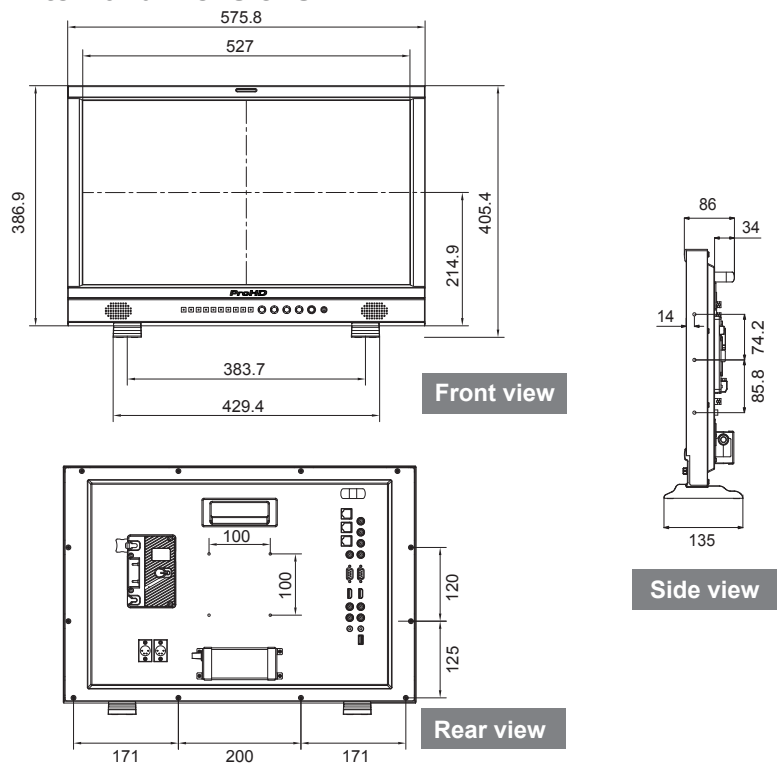
Rear Terminals	
RS-485 ×2	UMD input and output
RS-485 ×1	GPI input
BNC ×3	Y/Pb/Pr input
BNC ×2	CVBS input and loop output
RS-232C ×1	UMD input
VGA ×1	VGA input
HDMI-A ×2	HDMI input & loop out (no HDCP)
BNC ×2	SDI 1 input and loop output
BNC ×2	SDI 2 input and loop output
RCA ×2	Analog audio L and R input
USB ×1	USB firmware upgrade

Compatible video formats			
CVBS	NTSC / PAL		
Y/Pb/Pr	480i, 480p, 576i, 576p, 720p (50 / 60), 1080i (50 / 60)		
HDMI	480i / 576i / 480p / 576p		
	1080i (60 / 59.94 / 50)		
	720p (60 / 59.94 / 50)		
	1080p (60 / 59.94 / 50 / 30 / 29.97 / 25 / 24 / 23.98)		
	1080psf (30 / 29.97 / 25 / 24 / 23.98)		
SDI	2K	2048×1080p (24 / 24sF / 23.98 / 23.98sF)	
	SMPTE-425M	1080p (60 / 59.94 / 50)	
	SMPTE-274M	1080i (60 / 59.94 / 50)	
		1080p (30 / 29.97 / 25 / 24 / 23.98)	
	SMPTE-RP211	1080psf (30 / 29.97 / 25 / 24 / 23.98)	
	SMPTE-296M	720p (60 / 59.94 / 50)	
VGA	SMPTE-125M	480i (59.94)	
	ITU-R BT.656	576i (50)	
VGA		640×480, 800×600, 1024×768, 1152×864, 1280×768, 1280×960, 1280×1024, 1600×1200	

## Specifications

LCD Display	
Size	23.8 inches wide format
Display area	527mm×296mm
Resolution	1920×1080 (Full HD)
Color depth	16.77 million
Aspect ratio	16:9
Brightness	250cd/m2
Contrast	1000:1
Viewing Angle	178°(H) / 178°(V)
Surface treatment	Non-glass
Backlighting	LED
General	
Working voltage	DC / battery 11V-17V / AC 110~240V
Power consumption	Max 36W
Working temperature	0°C - +40°C
Working humidity	10% - 90%
Storage temperature	- 15°C - + 60°C
Storage humidity	10% - 90%
VESA standard	100mm×100mm (M4×4mm screw)
Dimensions	576×387×52mm
Net weight (w/o stand)	7.2 Kg

## External dimensions



E. & O.E. Design and specifications subject to change without notice  
 Copyright 2016, JVCKENWOOD Corporation. All Rights Reserved.  
 Manufactured by SWIT Electronics Co., Ltd.

# JVCKENWOOD

Distributed by: