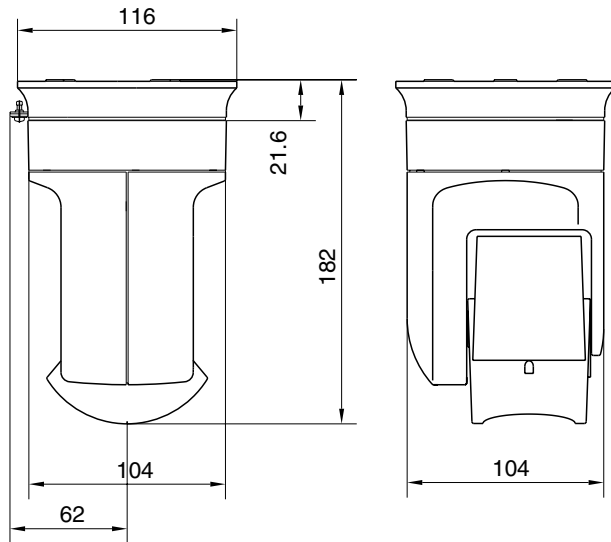


Model Name:VN-C3 (a sample procedure for mounting the model to the ceiling by using mounting kit : VN-BK30)

### Dimensions



### Specifications

Mass : 0.73 kg (camera)

: 0.14 kg (fixtures)

Total mass : 0.87 kg

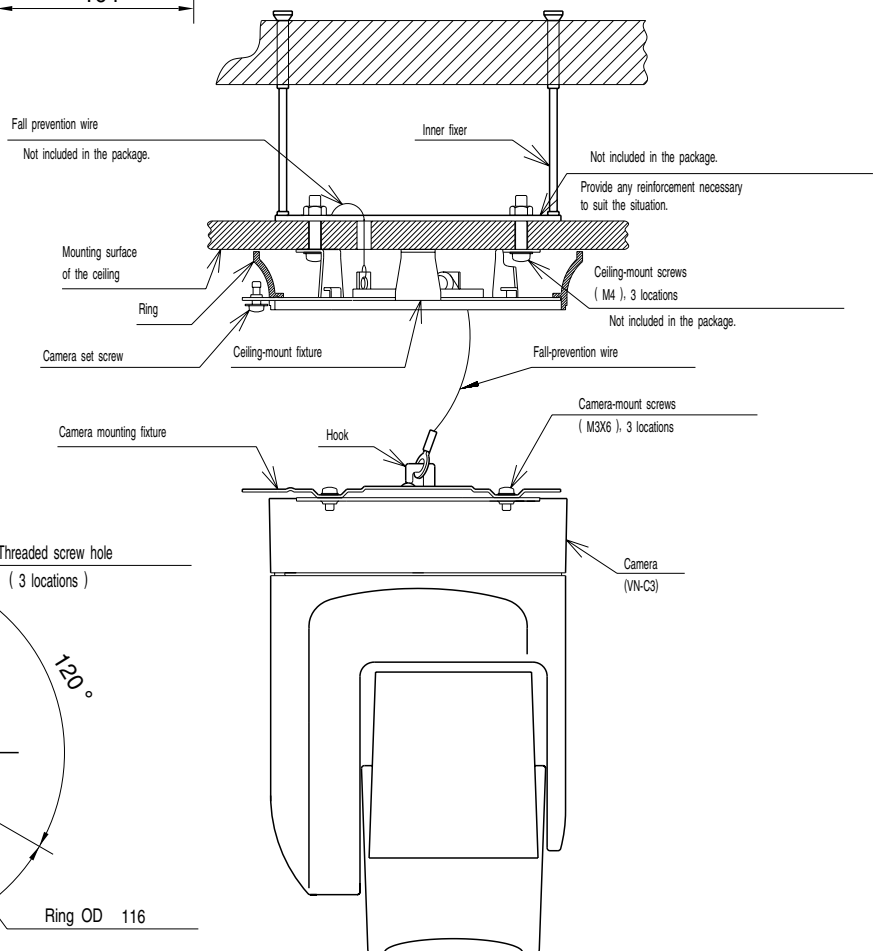
### Materials

Screws	M4 machine screws or M4 hexagon head bolts & nuts
Quantity	3

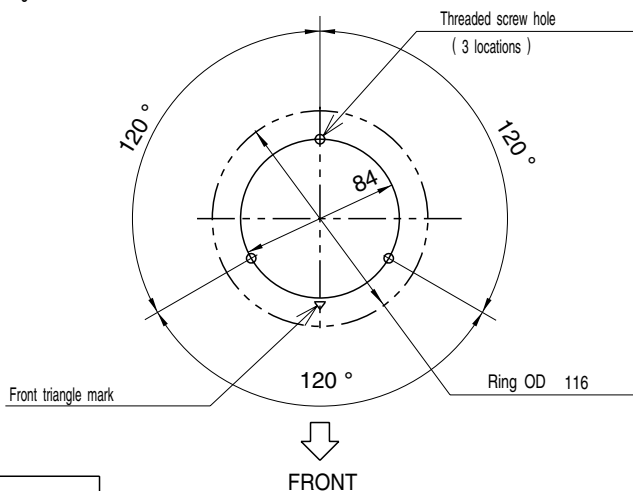
### Mounting Procedure

Perform the steps below for mounting this model (mounting kit:VN-BK30)

1. Align the ring and the ceiling-mount fixture as shown in the diagram and secure them to the ceiling with the 3 pcs. M4 machine screws.
2. Align the front triangle mark on the camera-mount fixture with the camera front, and secure them with the 3 pcs. M3X6 machine screws.
3. Hitch the fall-prevention wire from the ceiling-mount fixture to the hook of the camera-mount fixture.
4. Align the triangle marks of the ceiling-and camera-mount fixtures. Fit the fixture while being careful not to catch the fall-prevention wire, and turn it counter-clockwise until it comes to the end. Tighten the camera fixing screws.



### Mounting hole dimensions



### Notes

1. Make sure that the ceiling is more than 10 times the strength of total mass to support the unit. If it isn't, be sure to provide adequate reinforcement. Also, avoid mounting the model directly to plasterboard.
2. We recommend the use of a fall-prevention wire. Use a wire that offers more than 10 times the strength of total mass.