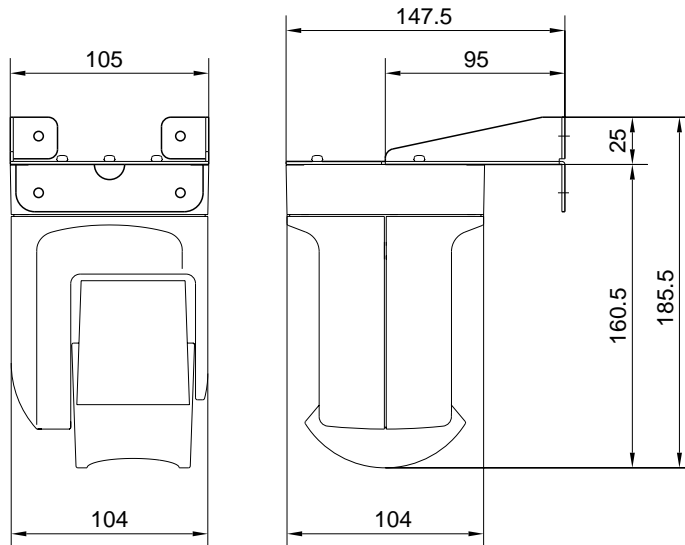


Model Name: VN-C3 (a sample procedure for mounting the VN-C3 to a wall using the VN-BK30)

Dimensions



Specifications

Mass: 0.73 kg (Main body of the camera)
 : 0.27 kg (Fixtures)
 Total Mass: 1.0 kg

Materials

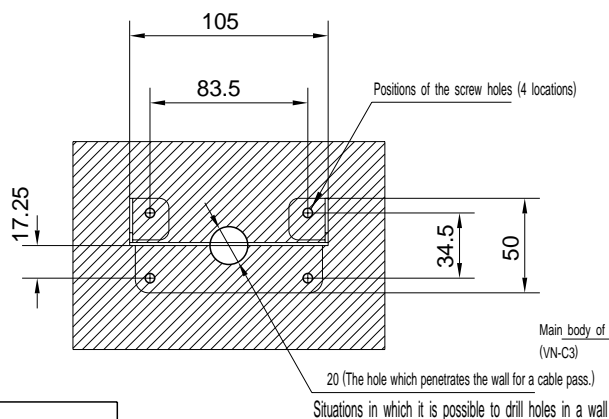
Screws	M4 small screws or M4 hexagon head bolts and nuts
Quantity	4

VN-C3 Sample Mounting Procedure

In order to mount this model perform the steps detailed below (using the mounting kit VN-BK31)

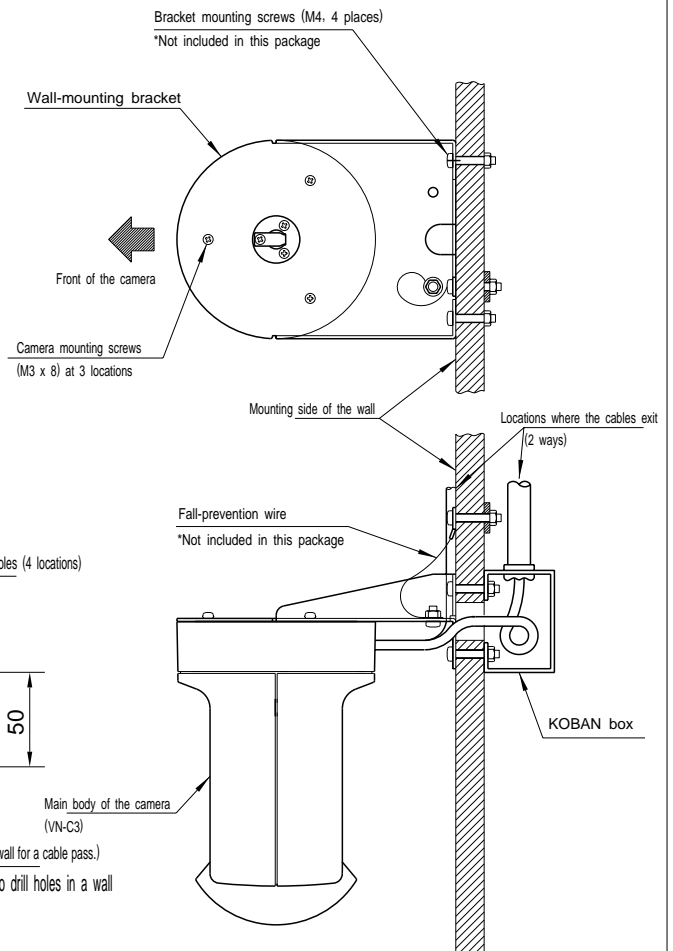
1. Secure the wall-mounting bracket to the wall using the mounting screws M4 (4).
2. Using screws of M4 or larger or hexagon head bolts, fix the fall-prevention wire to a secure place (See. Notes 2).
3. Connect both the signal and power supply cables to the main body of the camera.
4. After connecting the camera to the appropriate cables, secure it to the wall-mounting bracket by using the provided screws M3 x 8 (3).

Size of the mounting hole



Notes

1. Make sure that the wall is strong enough to endure more than 10 times the weight of the camera and the mounting kit.
If the wall is judged not to be strong enough, make sure that some kind of reinforcement is used.
2. We recommend the use of a fall-prevention wire. Take the entire weight into consideration and use a wire strong enough to withstand 10 times the weight of the camera and the mounting kit.



For further information,
contact the JVC Optical Communications Division.